

SURVEY &
REMONUMENTATION

APR 07 1998

Allegheny County Remonumentation
LAND CORNER RECORDATION CERTIFICATE
Filing Requirement of Act 74, Mich. P.A. 1970

SECTION

For corners in Allegheny
(County)

Located In: Corner Code #

- | | | |
|------------------------------------|--------------------------|--------------------|
| 1. Public Land Survey | T <u>4N</u> R <u>13W</u> | <u>L-1 (N1, 1)</u> |
| | T _____ R _____ | <u>Salem Twp.</u> |
| | T _____ R _____ | _____ |
| | T _____ R _____ | _____ |
| 2. Property Controlling in Section | S _____ T _____ R _____ | _____ |
| | S _____ T _____ R _____ | _____ |
| 3. Miscellaneous Property in Sec. | S _____ T _____ R _____ | _____ |
| | S _____ T _____ R _____ | _____ |

98 JAN 21 PM 1:36
REGISTER OF DEEDS
ALLEGHENY COUNTY, PA.
Joseph L. Carter

FILED

Register of Deeds Stamp & File Number

4. Lot No. _____, Recorded Plat _____
5. Private Claims _____

A	B	C	D	E	F	G	H	I	J	K	L	M
2	6	5	4	3	2	1						
3												
4	7	8	9	10	11	12						
5												
6	16	17	16	15	14	13						
7												
8	19	20	21	22	23	24						
9												
10	30	29	28	27	26	25						
11												
12	31	32	33	34	35	36						
13												

I, John C. Bueche, in a field survey on April 18, 19 97, do hereby certify that under requirements of P.A. 74, Michigan P.A. of 1970, the corner points mentioned in lines 1 and 2 above were in conformance with regulations and rules therefore as required in the current manual of survey instructions of the United States Department of the Interior, Bureau of Land Management or by a decree of a Court of Law and/or that the corner points mentioned in lines 3, 4 and 5 above were in conformance with the rules of the Michigan Board of Land Surveyors or by a Decree of a Court of Law; established, re-established, monumented, re-monumented, recovered, found as expressed below:

NOTE: Not more than 4 corners, all in the same town and range, may be recorded on this certificate.

A. Description of original monument and accessories and/or subsequent restoration:

L-1 GLO	LCRC L2, P360	L882, P654
Lucius	Jan., 1975 CP Co.	Survey same inform.
Lyon, DS	Set rebar 1/2 dist.	as on LCRC
Not set	& on sec. line	
	TP N 20° E 29.74'	
	Rd. sign N 40° E 28.00'	
	PP S 40° E 70.90'	
	SE cor. garg. N 5° W 55.93'	

APPROVED REMONUMENTATION CORNER
P.A. 345 OF 1990
ALLEGHENY COUNTY
DATE APPROVED 5-13-97
COUNTY REP. K.V.O.

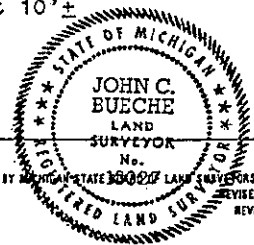
B. Description of corner evidence found and/or method applied in restoring or reestablishing corner:

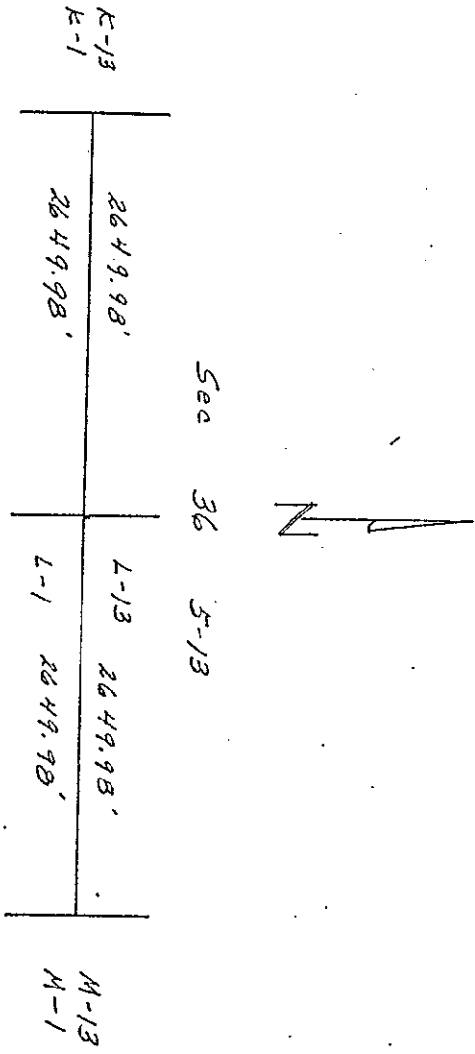
L-1 Found PK .20 S & .30 E of point set for corner
Common corner N 1/4 1, 4-13 & S 1/4 36, 5-13
Set corner 1/2 the distance on line between SE 36 & SW 36, 5-13
(both corners are common)
Meas. E 2650.28' + Meas. W 2650.28' = 5299.97' / 2 = 2649.98'
CP 2650.28' + CP 2650.28' = 5300.56'
PP S 40° E 70.90' ±
SE cor. garg. N 5° W 55.93' ±
This position not established by original government surveyors.
This monument is accepted as the best available evidence of the position of the corner.
Traverse K-13 to M-13 5299.96'
See sketch on back
Peer group approved May 13, 1997.

C. Description of monument for corner and accessories established to perpetuate locating the position of the corner:

L-1 Set Allegheny Co. Mon. (3/4" x 24" pin with cap) in bit. road
Nail & Ottawa Co. Remon. Tag in S side PP N 70° W 147.05'
Nail & Ottawa Co. Remon. Tag in E side 10" Elm N 07° E 45.24'
Nail & Ottawa Co. Remon. Tag in SW side PP S 32° E 71.22'
NE cor. wood fnd. to bldg. S 36° W 77.85'
NW cor. wood fnd. to bldg. S 56° W 113.30'
SE cor. hse. frame N 05° W 55.49'
On C/L bit. E-W, on fence North; C/L gravel South East 10' ±

Signed by John C. Bueche Date 7-5-97
Surveyor's Michigan License No. 13027





CORPORA
 DATA CENTER
 4770
 WASHINGTON
 DISTRICT OF COLUMBIA