

# REMONUMENTATION

APR 25 1995

## COMMISSION

### ALLEGAN COUNTY REMONUMENTATION LAND CORNER RECORDATION CERTIFICATE Filing Requirement of Act 74, Mich. P.A. 1970

For corners in

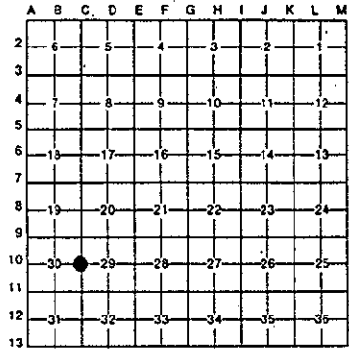
<u>Allegan</u> (County)	Located In:	Corner Code #/
1. Public Land Survey	T <u>4N</u> R <u>14W</u>	<u>C-10</u>
	T ___ R ___	<u>W 1/4 Cor.</u>
	T ___ R ___	<u>Sec. 29</u>
	T ___ R ___	<u>E 1/4 Cor.</u>
2. Property Controlling in Section	S ___ T ___ R ___	<u>Sec. 30</u>
	S ___ T ___ R ___	<u>Overisel Twp.</u>
3. Miscellaneous Property in Sec.	S ___ T ___ R ___	
	S ___ T ___ R ___	
4. Lot No. _____, Recorded Plat _____		
5. Private Claims _____		

REGISTER OF DEEDS  
 ALLEGAN COUNTY, MICHIGAN  
 1994 DEC 30 PM 12:11  
 REGISTER OF DEEDS Stamp & File Number

FILED

I, Kirk Van Order, in a field survey on May 16, 1993, do hereby certify that under requirements of P.A. 74, Michigan P.A. of 1970, the corner points mentioned in lines 1 and 2 above were in conformance with regulations and rules therefore as required in the current manual of survey instructions of the United States Department of the Interior, Bureau of Land Management or by a decree of a Court of Law and/or that the corner points mentioned in lines 3, 4 and 5 above were in conformance with the rules of the Michigan Board of Land Surveyors or by a Decree of a Court of Law; established, re-established, monumented, re-monumented, recovered, found as expressed below:

NOTE: Not more than 4 corners, all in the same town and range, may be recorded on this certificate.



A. Description of original monument and accessories and/or subsequent restoration:

- C-10
- GLO set post at 40.00 chains North of C-11
  - 12" Beech N61°E 31 links
  - 20" Dogwood S 6 links
  - Old notes shows stone
  - 16" Beech NE 62 links
  - 14" Maple NE 98 links
  - 8" Elm SW 50 links
  - No recorded LCRC

APPROVED REMONUMENTATION CORNER  
 P.A. 345 OF 1990  
 ALLEGAN COUNTY  
 DATE APPROVED 6-14-94  
 COUNTY REP. [Signature]

(Continued on back of sheet)

B. Description of corner evidence found and/or method applied in restoring or reestablishing corner:

C-10  
 Fd. stone 7" x 8" x 10" in size with 1" x 20" tapered steel rods on South side and below stone. Was established using improper procedures and is not utilized in this survey.  
 Fd. stone 14" x 18" x 20" in size with narrow end set upward at the C/L intersection of gravel roads running North and South and East and West.

And is excepted as a careful and faithful perpetuation of the position of the original corner.

Peer Group approved 6-14-94.

C. Description of monument for corner and accessories established to perpetuate locating the position of the corner:

C-10  
 Removed stones and tapered steel rods and set a standard Allegan Co. Remon. monument (3/4" x 36" steel rod w/red cap #23520)

Nail & Remon. tag in N side Power Pole	AZ. 102°52'10"	251.52'
Nail & Remon. tag in NW side Power Pole	AZ. 235°02'40"	70.77'
South face of gas pipeline vent pipe	AZ. 357°08'40"	356.25'
South face of gas pipeline marker pipe	AZ. 03°18'10"	310.15'
West face of gas pipeline marker pipe	AZ. 87°03'04"	247.90'
Unapproved corner position	AZ. 51°14'24"	8.91'

Signed by [Signature] Date 12-30-94  
 Surveyor's Michigan License No. 23520

FORM APPROVED BY MICHIGAN STATE BOARD OF LAND SURVEYORS, JAN. 28, 1971  
 REVISED MAY 14, 1975  
 REVISED JAN., 1983

0005 PAGE 146

Section A (continued from Page 1)C-10

•Ratekin witness card shows 1" iron fd. 10-2-1981

St. Sign	N60°W	38.3'
Power Pole	S45°W	79.35'
Tele. Cable Post	S30°E	38.5'
C/L 46th St.	W	6'+/-
C/L 139th Ave.	S	6'+/-
•W-M notes show 3/4" iron		
C/L E & W Rd.	S	7'+/-
C/L N & S Rd.	W	7'+/-