

REMONUMENTATION

APR 25 1995

COMMISSION

ALLEGAN COUNTY REMONUMENTATION LAND CORNER RECORDATION CERTIFICATE Filing Requirement of Act 74, Mich. P.A. 1970

For corners in

| | | |
|---------------------------------------|--------------------------|----------------------|
| <u>Allegan</u> (County) | Located In: | Corner Code # |
| 1. Public Land Survey | T <u>4N</u> R <u>14W</u> | <u>D-10</u> |
| | T ___ R ___ | <u>Center</u> |
| | T ___ R ___ | <u>Sec. 29</u> |
| | T ___ R ___ | <u>Overisel Twp.</u> |
| 2. Property Controlling in Section | S ___ T ___ R ___ | _____ |
| | S ___ T ___ R ___ | _____ |
| 3. Miscellaneous Property in Sec. | S ___ T ___ R ___ | _____ |
| | S ___ T ___ R ___ | _____ |
| 4. Lot No. _____, Recorded Plat _____ | | |
| 5. Private Claims _____ | | |

REGISTER OF DEEDS
 ALLEGAN COUNTY MICHIGAN
 1994 DEC 30 PM 12:18
 Register of Deeds Stamp & File Number

FILED

I, Kirk Van Order, in a field survey on September 13, 1994, do hereby certify that under requirements of P.A. 74, Michigan P.A. of 1970, the corner points mentioned in lines 1 and 2 above were in conformance with regulations and rules therefore as required in the current manual of survey instructions of the United States Department of the Interior, Bureau of Land Management or by a decree of a Court of Law and/or that the corner points mentioned in lines 3, 4 and 5 above were in conformance with the rules of the Michigan Board of Land Surveyors or by a Decree of a Court of Law; established, re-established, monumented, re-monumented, recovered, found as expressed below:

NOTE: Not more than 4 corners, all in the same town and range, may be recorded on this certificate.

A. Description of original monument and accessories and/or subsequent restoration:

- D-10
 •Not set by GLO
 •No recorded LCRC

(Continued on back of sheet)

APPROVED REMONUMENTATION CORNER
 P.A. 345 OF 1990
 ALLEGAN COUNTY
 DATE APPROVED 8-9-94
 COUNTY REP. Kirk Van Order

B. Description of corner evidence found and/or method applied in restoring or reestablishing corner:

D-10
 Did not find capped iron due to road construction, but capped iron set in 1984 was set at intersection of 1/4 line with corner C-10 occupying a non-approved peer group position.

Reset D-10 at intersection of 1/4 lines.

This position not established by original government surveyors.

This monument is accepted as the best available evidence of the position of the corner.

Peer Group approved 8-9-94. 10,555.34' on road traverse

C. Description of monument for corner and accessories established to perpetuate locating the position of the corner:

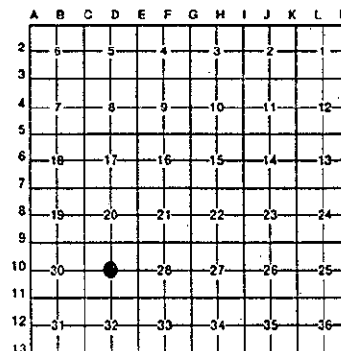
- D-10
 Set standard Allegan Co. Remon monument (3/4" x 36" steel rod w/red cap #23520)
- | | | |
|---|----------------|----------|
| Nail & Remon. tag in E side Power Pole | AZ. 347°07'00" | 236.30' |
| Nail & Remon. tag in NW side Power Pole | AZ. 236°51'20" | 66.56' |
| Nail & Remon. tag in N side Power Pole | AZ. 110°15'15" | 141.88' |
| NW corner brick porch | AZ. 137°59'24" | 221.13' |
| N 1/4 corner of Section 29 | AZ. 00°00'00" | 2637.53' |
| S 1/4 corner of Section 29 | AZ. 180°00'00" | 2634.31' |
| E 1/4 corner of Section 29 | AZ. 92°59'55" | 2649.73' |
| W 1/4 corner of Section 29 | AZ. 272°59'55" | 2633.77' |

Signed by _____
 Surveyor's Michigan License No. 23520

Date 12.30-94

FORM APPROVED BY MICHIGAN STATE BOARD OF LAND SURVEYORS, JAN. 28, 1971
 REVISED MAY 14, 1975
 REVISED JAN., 1982

REF: 0005 PAGE 148



Section A (continued from Page 1)

D-10

•K.V.O. survey (84-415) 6-14-1984

Shows a capped iron was set

| | | |
|---------------------------------|-------|--------|
| Power Pole | SW | 70.76' |
| C/L Stop Sign | NW | 44.73' |
| C/L gravel 139th Ave. | N | 9' |
| C/L gravel 45th St. | W | 7.5' |
| C/L Street & Stop Sign | S,,SE | 27.9' |
| C/L Tele. Ped. | SE | 29.30' |
| Iron | E | 9.81' |
| •W-M witnesses to a K.V.O. iron | | |
| C/L E & W Road | N | 11' |
| C/L N & S Road | W | 8' |