

SURVEY &
REMONUMENTATION

APR 07 1998

Allegan County Remonumentation
LAND CORNER RECORDATION CERTIFICATE
Filing Requirement of Act 74, Mich. P.A. 1970

SECTION
For corners in

| | | |
|---------------------------------------|--------------------------|---------------|
| _____ Allegan _____ (County) | Located in: | Corner Code # |
| 1. Public Land Survey | T <u>4N</u> R <u>14W</u> | ✓ E-1 (NE, 5) |
| | T _____ R _____ | Overisel Twp. |
| | T _____ R _____ | _____ |
| | T _____ R _____ | _____ |
| 2. Property Controlling in Section | S _____ T _____ R _____ | _____ |
| | S _____ T _____ R _____ | _____ |
| 3. Miscellaneous Property in Sec. | S _____ T _____ R _____ | _____ |
| | S _____ T _____ R _____ | _____ |

98 JAN 21 PM 1:27
REGISTER OF DEEDS
ALLEGAN COUNTY, MICH.
James A. E. [Signature]

FILED

Register of Deeds Stamp & File Number

4. Lot No. _____, Recorded Plat _____
5. Private Claims _____

| | | | | | | | | | | | | | |
|----|----|----|----|----|----|----|----|----|----|---|---|---|---|
| | A | B | C | D | E | F | G | H | I | J | K | L | M |
| 2 | 6 | 5 | 4 | 3 | 2 | 1 | | | | | | | |
| 3 | | | | | | | | | | | | | |
| 4 | 7 | 8 | 9 | 10 | 11 | 12 | | | | | | | |
| 5 | | | | | | | | | | | | | |
| 6 | 16 | 17 | 18 | 19 | 20 | 21 | 22 | 23 | 24 | | | | |
| 7 | | | | | | | | | | | | | |
| 8 | 19 | 20 | 21 | 22 | 23 | 24 | | | | | | | |
| 9 | | | | | | | | | | | | | |
| 10 | 30 | 29 | 28 | 27 | 26 | 25 | | | | | | | |
| 11 | | | | | | | | | | | | | |
| 12 | 31 | 32 | 33 | 34 | 35 | 36 | | | | | | | |
| 13 | | | | | | | | | | | | | |

I, John C. Bueche, in a field survey on May 9, 19 97, do hereby certify that under requirements of P.A. 74, Michigan P.A. of 1970, the corner points mentioned in lines 1 and 2 above were in conformance with regulations and rules therefore as required in the current manual of survey instructions of the United States Department of the Interior, Bureau of Land Management or by a decree of a Court of Law and/or that the corner points mentioned in lines 3, 4 and 5 above were in conformance with the rules of the Michigan Board of Land Surveyors or by a Decree of a Court of Law, established, re-established, monumented, re-monumented, recovered, found as expressed below:

NOTE: Not more than 4 corners, all in the same town and range, may be recorded on this certificate.

- A. Description of original monument and accessories and/or subsequent restoration:
- | | | |
|---|---|--|
| E-1 GLO 1831 Lucius Lyon, DS Intersect N. boundary 72-lks. W of post Set post cor. secs. 4&5 Birch 8 is cor. true | Survey HEI Fd. steel bar Oct., 1979 Ottawa Co. E 47.74' 4" Ash NNE 40.74' 8" Ash SE 22.55' C/L gravel rd. N 6' | Survey L987, P592 Alpha Eng. May, 1980 8" Ash S 5° E 10.03' 12" Tw. Sycamore N 70° W 69.17' W. end conc. culvt. S 30° E 41.50' |
|---|---|--|

- B. Description of corner evidence found and/or method applied in restoring or reestablishing corner:
- E-1 Found steel bar 0.14' South line of Twp. (1'± below grade)
Set point on South line of Twp. to the North
8" Ash SE 22.55'
C/L gravel rd. N 6'
Meas. West 2669.21' N¼ 5 (HEI 1979 2668.74')
Meas. East 2659.26' N¼ 4 (Alpha 1980 2660.37')
Traverse D-1 to E-1 2641.50'

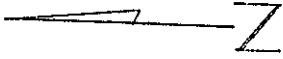
APPROVED REMONUMENTATION CORNER
P.A. 345 OF 1990
ALLEGAN COUNTY
DATE APPROVED 5-13-97
COUNTY REP. K.V.O.

And is accepted as a careful and faithful perpetuation of the position of the original corner.
Peer group approved May 13, 1997.

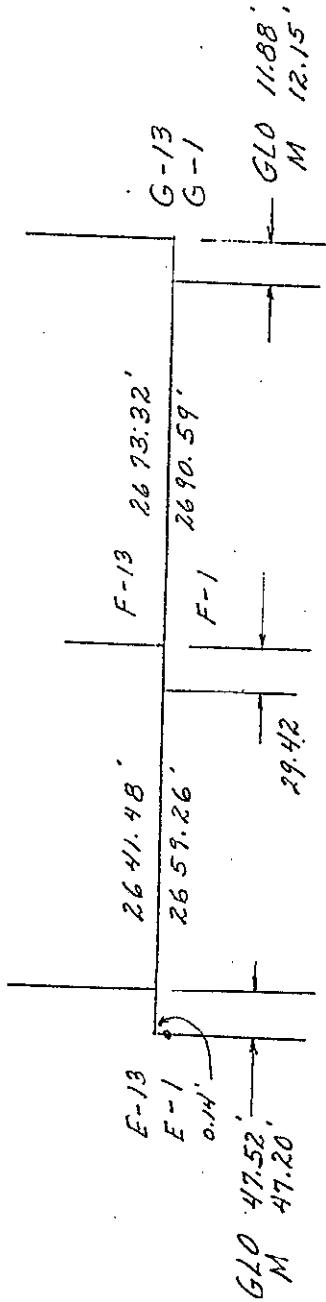
- C. Description of monument for corner and accessories established to perpetuate locating the position of the corner:
- E-1 Set Allegan Co. Mon. (3/4" x 24" pin with cap) .5' below grade on South line of Twp. to the North (left steel bar)
Nail & Allegan Co. Remon. Tag in E side 26" Ash S 9° E 26.82'
Nail & Allegan Co. Remon. Tag in NW side 12" Ash S 45° W 33.82'
Nail & Allegan Co. Remon. Tag in NE side 12" Ash N 42° W 57.77'
Nail & Allegan Co. Remon. Tag in W side 8" Ash N 5° E 50.26'
C/L hyd. N 60° E 91.27'
C/L gravel E-W, North 6'±; C/L bit. rd. N, East 47'±
Ottawa Co. Mon. (NE 32, 5-14) East 47.20'
Steel bar South 0.14'



Signed by John C. Bueche P.S. 13027 Date 10-22-97
Surveyor's Michigan License No. _____



Sec 33 5-14



Sec 4 4-14