

ALLEGAN COUNTY REMONUMENTATION
 LAND CORNER RECORDATION CERTIFICATE
 Filing Requirement of Act 74, Mich. P.A. 1970

1995 DEC 14 PM 2:36
 FILED
 REGISTER OF DEEDS
 ALLEGAN COUNTY, MICHIGAN

For corners in	Located In:	Corner Code #
Allegan (County)		
1. Public Land Survey	T <u>4N</u> R <u>14W</u>	<u>H-11</u>
	T _____ R _____	<u>S 1/4 Cor.</u>
	T _____ R _____	<u>Sec. 27</u>
	T _____ R _____	<u>N 1/4 Cor.</u>
2. Property Controlling in Section	S _____ T _____ R _____	<u>Sec. 34</u>
	S _____ T _____ R _____	<u>Overisel Twp.</u>
3. Miscellaneous Property in Sec.	S _____ T _____ R _____	
	S _____ T _____ R _____	

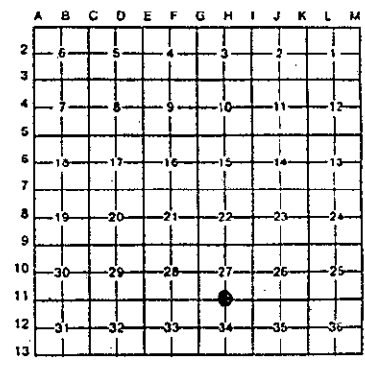
Register of Deeds Stamp & File Number

SURVEY & REMONUMENTATION

APR 29 1996

COMMISSION

4. Lot No. _____, Recorded Plat _____
 5. Private Claims _____



I, Kirk L. Van Order in a field survey on August 28, 19 95 do hereby certify that under requirements of P.A. 74, Michigan P.A. of 1970, the corner points mentioned in lines 1 and 2 above were in conformance with regulations and rules therefore as required in the current manual of survey instructions of the United States Department of the Interior, Bureau of Land Management or by a decree of a Court of Law and/or that the corner points mentioned in lines 3, 4 and 5 above were in conformance with the rules of the Michigan Board of Land Surveyors or by a Decree of a Court of Law; established, re-established, monumented, re-monumented, recovered, found as expressed below:

NOTE: Not more than 4 corners, all in the same town and range, may be recorded on this certificate.

A. Description of original monument and accessories and/or subsequent restoration:

- H-11
 ●GLO West 39.69' set 1/4 section post
 Hemlock 10" S43°W 12
 Do 12" N27E 3
 ●Hugh McDougall survey recorded May 11, 1905
 Fd. old stake and set stone
 Distance to SE corner Section 27 2655.3'
 Distance to SW corner Section 27 2622'
 Distance to center of Section 27 2668.2'
 Ash 49 SW 33.8' (continued on back of sheet)

B. Description of corner evidence found and/or method applied in restoring or reestablishing corner.

- H-11
 Kirk L. Van Order field survey for remon. Aug. 28, 1995.
 Fd. 3/4" x 9" steel rod in mon. box
 Used ties from survey dated Dec. 21, 1983 to set position

And is accepted as a careful and faithful perpetuation of the position of the original corner.

Peer group approved Oct. 10, 1995.

APPROVED REMONUMENTATION CORNER
 P.A. 345 OF 1990
 ALLEGAN COUNTY
 DATE APPROVED 10-10-95
 COUNTY REP. [Signature]

C. Description of monument for corner and accessories established to perpetuate locating the position of the corner:

- H-11
 Removed steel rod and set standard Allegan Co. Remon. monument (3/4" x 24" steel rod w/red cap #23520)
 Nail & Remon. tag in NE side power pole N10°W 46.95'
 Nail & Remon. tag in NE side 17" tw. Maple N07°W 80.21'
 Nail & Remon. tag in SW 17" Ash S15°E 63.85'
 Nail & Remon. tag in NW 13" Maple S45°W 76.23'
 South edge of asphalt road South 5.6'

Signed by [Signature] Date 12-13-95
 Surveyor's Michigan License No. 23520



Section A (continued from Page 1)H-11

•Consumers Power Co. survey dated Dec. 17, 1957 by J.L. Halfacre

South 1/4 post of Section 27 set 1" x 50" pipe

20" Elm S61°W 48.0'

14" Elm S78°E 94.55'

"T" iron N 33.06'

Power pole N3°W 43.23'

•D.A. Ratekin witness card (ties same as above)

•Kirk L. Van Order survey recorded in L. 1074, P. 250, dated 12-21-1983

Set RR spike at corner 2655.40' West of Southeast corner of Section 27

12" Ash SE 64.00'

7" Maple SW 76.28'

13" Maple NW 90.17'

Power pole N,NW 46.90'

14" Maple N,NW 80.18'