

**LAND CORNER RECORDATION CERTIFICATE**  
**Filing Requirement of Act 74, Mich. P.A. 1970**

For corners in

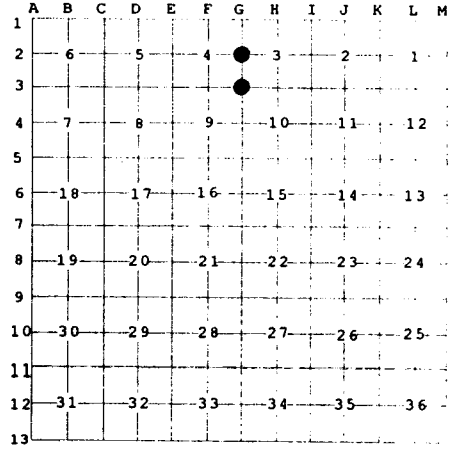
<u>Alpena</u> (County)	Located In:	Corner Code #
1. Public Land Survey	T <u>29N</u> R <u>6E</u>	<u>G-2</u>
	T <u>29N</u> R <u>6E</u>	<u>G-3</u>
2. Property Controlling in Section	S _____ T _____ R _____	_____
	S _____ T _____ R _____	_____
3. Miscellaneous Property in Sec.	S _____ T _____ R _____	_____
	S _____ T _____ R _____	_____



4. Lot No. \_\_\_\_\_, Recorded Plat \_\_\_\_\_

5. Private Claims \_\_\_\_\_

I, Carl T. Kiiskila, in a field survey on July 08, 19 98 do hereby state that under requirements of P.A. 74, Michigan P.A. of 1970, the corner points mentioned in lines 1 and 2 above were in conformance with regulations and rules therefore as required in the current manual of survey instructions of the United States Department of the Interior, Bureau of Land Management or by a decree of a Court of Law and /or that the corner points mentioned in lines 3, 4 and 5 above were in conformance with the rules of the Michigan Board of Land Surveyors or by a Decree of a Court of Law; established, re-established, monumented, recovered, found as expressed below:



**NOTE:** Not more than 2 corners, all in the same town and range, may be recorded on this certificate.

**A. Description of original monument and accessories and/or subsequent restoration:**

G-2	GLO set post – Lewis Clason 1839.	G-3	GLO set post – Lewis Clason 1839.
Wit:	Cedar 12" N 47° E 14 links	Wit:	Tamarack 4" S14°W 18 links
	Tamarack 8" S 32° W 23 links		No other trees convenient.

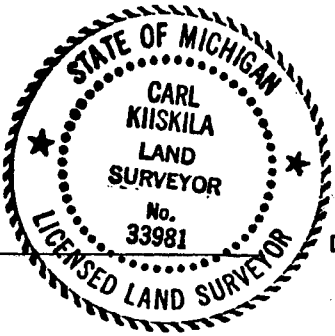
**B. Description of corner evidence found and/or method applied in restoring or reestablishing corner:**

G-2	Reestablished the West Quarter Corner of Section 3 on line between found corner G-1 and reestablished corner G-3, prorated to U.S. run out.	G-3	Reestablished the Southwest Corner of Section 3 by double proportionate measurement between corners one mile to the north and west and corners ½ mile to the south and east.
-----	---	-----	--

**C. Description of monument for corner and accessories established to perpetuate locating the position of the corner:**

G-2	Set 1" x 32" iron pipe with aluminum DNR monument cap.	G-3	Set 1" x 60" iron pipe with aluminum DNR monument cap.
Wit:	Set nail in 5" Twin Balsam N 13° W 3.11'	Wit:	Set nail in 14" Spruce S 13° E 69.55'
	Set nail in 8" Balsam N 50° E 17.09'		Set nail in 4" Balsam S 41° W 50.35'
	Set nail in 24" Red Pine S 71° E 57.23'		Set nail in 8" Poplar N 18° E 77.25'
	Set nail in 6" Twin Cherry S 8° W 15.19'		Set nail in 12" Spruce N 28° W 107.14'

Signed by Carl T. Kiiskila  
 Surveyor's Michigan License No. 33981



Date 6-14-99