

1995 Alpena County Remonumentation Corner

JUN 16 2 53 PM '95

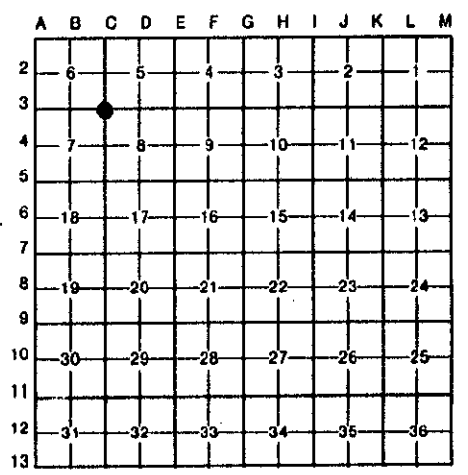
REGISTER OF DEEDS

LAND CORNER RECORDATION CERTIFICATE
Filing Requirement of Act 74, Mich. P.A. 1970

For corners in

Form with fields: Alpena (County), Located In: T 29N R 7E, Corner Code: C-3 (NW,8) Ossineke Twp.
1. Public Land Survey
2. Property Controlling in Section
3. Miscellaneous Property in Sec.
4. Lot No.
5. Private Claims

Register of Deeds Stamp & File Number



I, Thomas L. Fabis, in a field survey on March 23, 1995, do hereby certify that under requirements of P.A. 74, Michigan P.A. of 1970, the corner points mentioned in lines 1 and 2 above were in conformance with regulations and rules therefore as required in the current manual of survey instructions of the United States Department of the Interior, Bureau of Land Management or by a decree of a Court of Law and/or that the corner points mentioned in lines 3, 4 and 5 above were in conformance with the rules of the Michigan Board of Land Surveyors or by a Decree of a Court of Law; established, re-established, monumented, re-monumented, recovered, found as expressed below:

NOTE: Not more than 4 corners, all in the same town and range, may be recorded on this certificate.

- A. Description of original monument and accessories and/or subsequent restoration:
1839: G.L.O. Survey by Lewis Clason - Set post & referenced: (Hem. 14 - N57E - 15, Hard Maple 24 - S44W-11).
1905: County Survey by Jos. W. McNeil - Dug up old stake, set new one & referenced.
1975-76: Road Commission Surveys by Gary St. Charles - set 1/2" iron over existing iron & referenced.
1981: Recorded Survey by Duane R. MacNeill - Found 1/2" iron & referenced.
UNDATED Survey Notes by Wilcox Associates - Found P.K. over good beep.
1992: Survey Notes by R.S. Scott Associates - Found P.K. nail in Bit. Road & referenced.

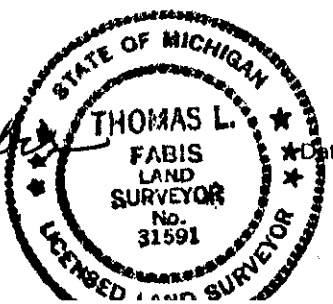
- B. Description of corner evidence found and/or method applied in restoring or reestablishing corner:
1995: Found P.K. nail over existing 1/2" iron rod in Bit. Road. Also found the following witnesses as per 1992 Survey Notes by R.S. Scott Associates: (P. Pole tag #22435 - S40 - 50.92, Cor. Fe. Post tag #22435 - S45E - 50.00' and Anchor Pole (shiner) -N45E - 51.00'). The position of this corner is compatible with county and local surveys and is accepted as a careful and faithful perpetuation of the position of the original corner.

SURVEY & REMONUMENTATION
AUG 23 1995
COMMISSION

- C. Description of monument for corner and accessories established to perpetuate locating the position of the corner:
1995: Removed existing corner material and set 1/2" iron rod inside a monument box and capped it with a 3" dia. aluminum cap stamped to identify the corner.
Reestablished witnesses are:
Exis. tag #22435 in P. Pole - S40W - 50.92'
Exis. (shiner) in Anchor Pole - N45E - 51.00'
Set tag #31591 in 6" Ash - N50W - 60.82'
Set tag #31591 in 18" Apple - S45E - 89.00'

P.A. 345 ALPENA COUNTY
PEER APPROVED May 18, 1995
[Signature]

Signed by Thomas L. Fabis
Surveyor's Michigan License No. 31591



June 12, 1995