

Dec 12 9 30 AM '94

REGISTER OF DEEDS

1994 Alpena County Remonumentation Corner

LAND CORNER RECORDATION CERTIFICATE Filing Requirement of Act 74, Mich. P.A. 1970

For corners in

Alpena (County)

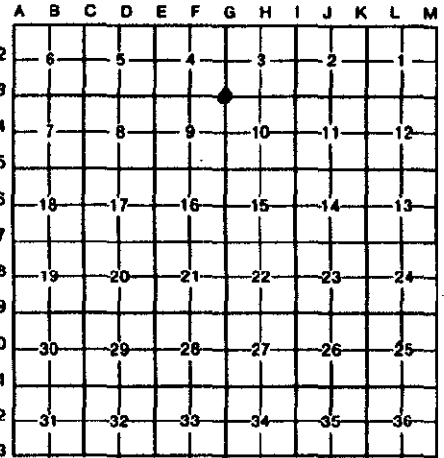
Located In:

Corner Code #

Table with 3 columns: Description, Located In (T, R, S), and Corner Code #. Includes rows for Public Land Survey, Property Controlling in Section, and Miscellaneous Property in Sec.

Register of Deeds Stamp & File Number

4. Lot No. Recorded Plat
5. Private Claims



Earl T. Lewis July 22 19 94

do hereby certify that under requirements of P.A. 74, Michigan P.A. of 1970, the corner points mentioned in lines 1 and 2 above were in conformance with regulations and rules therefore as required in the current manual of survey instructions of the United States Department of the Interior, Bureau of Land Management or by a decree of a Court of Law and/or that the corner points mentioned in lines 3, 4 and 5 above were in conformance with the rules of the Michigan Board of Land Surveyors or by a Decree of a Court of Law; established, re-established, monumented, re-monumented, recovered, found as expressed below:

NOTE: Not more than 4 corners, all in the same town and range, may be recorded on this certificate.

A. Description of original monument and accessories and/or subsequent restoration:

(GLO) August 18, 1839, Lewis Glason set post, witnesses given: W. Pine 9, N 51 E, 13 / Aspen 18, S 20 W, 04. 1904, Joseph W. McNeil, set new stake in place of old one. 1911, Joseph W. McNeil, no monumentation or witnesses given. 1973, James L Scott P.S., witnesses: Northwesterly, 50.8 feet, Power Pole / Northeasterly, 58 feet, Porch of Lenz store. October 28, 1976, Alpena County Road Commission found 6" concrete monument, raised monument in monument box, witnesses given: N 50° 30' W 58.43' Post / S 62° W 52.97' Power Pole

B. Description of corner evidence found and/or method applied in restoring or reestablishing corner:

1994, found 1/2" rebar in monument box.



C. Description of monument for corner and accessories established to perpetuate locating the position of the corner:

1994, Place Appropriately stamped Alpena County Remonumentation Aluminum Cap on existing 1/2" rebar in monument box, witnessed:

- N 15° E 120.02' P. Pole
N 85° E 160.4' Stop Sign
N 45° W 56.90' Tel Marker
N 45° W 53.00' P. Pole
N 45° E 57.80' SW Corner Porch of Lenz Store
N 15° W 206.97' P. Pole

P.A. 345 ALPENA COUNTY PEER APPROVED 9/29/94

Signed by Earl T. Lewis

Date December 5, 1994

Surveyor's Michigan License No. 27452