

**2000 Alpena County Remonumentation Corner
LAND CORNER RECORDATION CERTIFICATE**
Filing Requirement of Act 74, Mich. P.A. 1970

For corners in

<u>Alpena</u> <small>(County)</small>	Located In:	Corner Code #
1. Public Land Survey	T 29N R7E	J-9
	T R	
	T R	
	T R	
2. Property Controlling in Section	S T R	
	S T R	
3. Miscellaneous Property in Sec.	S T R	
	S T R	



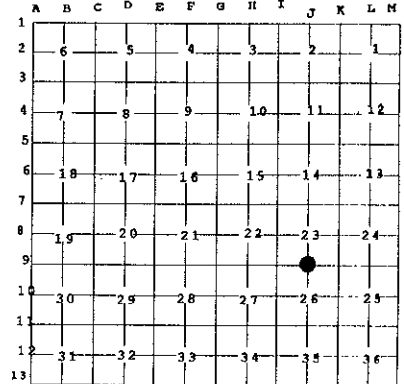
L- 2 P- 331
08/16/2000 09:32A
Page: 1 of 1

Kathy J. Matash, Register Alpena Co., MI LDC 9.00

Register of Deeds Stamp & File
Number

4. Lot No. _____, Recorded Plat _____
5. Private Claims _____

I, Daniel T. Kibbe, in a field survey on March 8, 2000 do hereby state that under requirements of P.A. 74, Michigan P.A. of 1970, the corner points mentioned in lines 1 and 2 above were in conformance with regulations and rules therefore as required in the current manual of survey instructions of the United States Department of the Interior, Bureau of Land Management or by a decree of a Court of Law and /or that the corner points mentioned in lines 3, 4 and 5 above were in conformance with the rules of the Michigan Board of Land Surveyors or by a Decree of a Court of Law; established, re-established, monumented, recovered, found as expressed below:



NOTE: Not more than 2 corners, all in the same town and range, may be recorded on this certificate.

A. Description of original monument and accessories and/or subsequent restoration:

- 1839: GLO Survey by Lewis Clawson Set quarter post.
Referenced:
Yellow Pine 20-N61°E-49
Yellow Pine 24-S49W-20
- 1987: County Survey by Gary St. Charles Found 1/2" iron pin
Referenced:
18" Double Birch-S33°W-77.44'
Service Pole-S71°W-101.70'
30" Double Maple-N07°W-88.58'
- 1996: Survey by Thomas L. Fabis Found 1/2" iron rod

B. Description of corner evidence found and/or method applied in restoring or reestablishing corner:

Found 1/2" rebar 6' South of centerline of road. Centerline of fence to South.

This corner position is compatible with county & local surveys. This corner position is accepted as a careful and faithful perpetuation of the position of the original corner.

C. Description of monument for corner and accessories established to perpetuate locating the position of the corner:

2000: Placed 3" Alpena County cap stamped to identify the corner over 1/2" iron rod 6" below grade.

- Referenced:
Found tag in twin birch-S33°W-77.44'
Found tag in 6" scrub oak-S47°E-47.06'
Found tag in power pole-N71°E-72.89'
Found tag in 18" twin maple-N04°E-88.58'

P.A. 345 ALPENA COUNTY
PEER APPROVED 7-12-2000
D.P.L.



Signed by *Daniel T. Kibbe*
Surveyor's Michigan License No. 37278

Date August 14, 2000

**SURVEY &
REMONUMENTATION**

JAN 25 2001

SECTION