

# LAND CORNER RECORDATION CERTIFICATE

Filing Requirement of Act 74, Mich. PA 1970

For Corners In: Alpena Located In \_\_\_\_\_ Corner Code # \_\_\_\_\_  
(County)

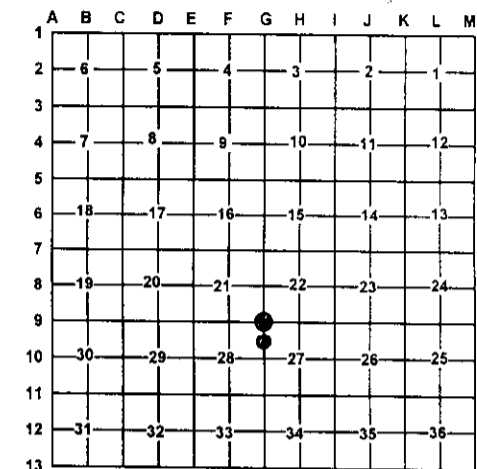
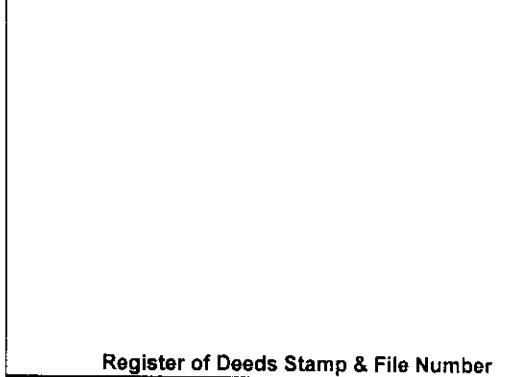
1. Public Land Survey	T	<u>30N</u>	R	<u>6E</u>	<u>G-9</u>		
	T	_____	R	_____	_____		
2. Property Controlling in Section	S	<u>28</u>	T	<u>30N</u>	R	<u>6E</u>	<u>7</u>
	S	_____	T	_____	R	_____	_____
3. Miscellaneous Property in Section	S	_____	T	_____	R	_____	_____
	S	_____	T	_____	R	_____	_____

4. Lot No: \_\_\_\_\_ Recorded Plat: \_\_\_\_\_

5. Private Claims: \_\_\_\_\_

I, Carl T. Kiiskila, in a field survey on January 13, 2002 do hereby state that under requirements of PA 74, Michigan PA of 1970, the corner points mentioned in lines 1 and 2 above were in conformance with regulations and rules therefore as required in the current manual of survey instructions of the United States Department of the Interior, Bureau of Land Management or by a decree of a Court of Law and/or that the corner points mentioned in lines 3, 4 and 5 above were in conformance with the rules of the Michigan Board of Land Surveyors or by a Decree of a Court of Law; established, re-established, monumented, recovered, found as expressed below:

**NOTE: Not more than 2 corners, all in the same town and range, may be recorded on this certificate.**



**A. Description of original monument and accessories and/or subsequent restoration:**

G-9 G.L.O. Lewis Clason D.S. 1840  
Set post corner section 21,22,27 & 28  
Wit: Spruce 8 S60°E 15 links  
Cedar 10 N56°W 18 links  
County Surveyor Joseph W. McNeil February 1889 ran  
N0°30'E 39.47 chains to the quarter corner section 21 and  
22. He corrected back and set 1/8 corner at 19.735 chains.

7- This corner was not established during the original government survey.

**B. Description of corner evidence found and/or method applies in restoring or re-establishing corner:**

G-9 In the fall of 2001 we looked for any evidence of J.W. McNeil corners. Unable to recover these corners I decided to reestablish this corner by double proportionate measurement between corners 1 mile to the South and West, and corners 1/2 mile to the North and East. I did not hold J.W. McNeil's distances North from this corner, with the thinking that he may have dropped a chain while doing his 1899 measurement. Double proportionate measurement as described above seems the most equitable to all involved.

7-Established the Northeast corner of the Southeast quarter of the Northeast quarter of section 28 as per B.L.M. instructions for the subdivision of a section.

**C. Description of monument for corner and accessories established to perpetuate locating the position of the corner:**

G-9 Set 1" X 48" pipe with DNR cap  
Wit: 4" Ash S40°E 21.41'  
6" Ash N35°E 29.88'  
5" Ash N30°W 36.82'  
8" Ash S86°E 7.01'  
Carsonite Post North 1'±

7- Set 5/8" X 32" rerod with P.S. cap #33981  
Wit: 6" Ash N81°E 12.93'  
5" Ash N24°E 31.50'  
5" Ash N81°W 33.46'  
3" Maple S14°E 31.38'  
Carsonite Post North 1'±

Signed by: Carl T. Kiiskila  
Surveyor's Michigan License No.: 33981

Date: 10-29-02

