

LAND CORNER RECORDATION CERTIFICATE
Filing Requirement of Act 74, Mich. P.A. 1970

For corners in

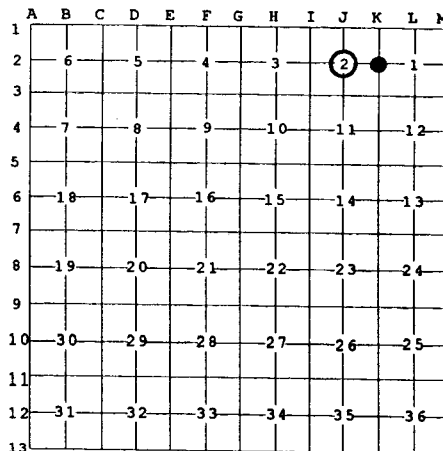
<u>Alpena</u> (County)	Located In:	Corner Code #
1. Public Land Survey	T 30N R 7E	J-2
	T 30N R 7E	K-2
2. Property Controlling in Section	S T R	
	S T R	
3. Miscellaneous Property in Sec.	S T R	
	S T R	

Register of Deeds Stamp & File Num

4. Lot No. _____, Recorded Plat _____

5. Private Claims _____

I, Carl T. Kiiskila, in a field survey on June 23, 19 99 do hereby state that under requirements of P.A. 74, Michigan P.A. of 1970, the corner points mentioned in lines 1 and 2 above were in conformance with regulations and rules therefore as required in the current manual of survey instructions of the United States Department of the Interior, Bureau of Land Management or by a decree of a Court of Law and /or that the corner points mentioned in lines 3, 4 and 5 above were in conformance with the rules of the Michigan Board of Land Surveyors or by a Decree of a Court of Law; established, re-established, monumented, recovered, found as expressed below:



NOTE: Not more than 2 corners, all in the same town and range, may be recorded on this certificate.

A. Description of original monument and accessories and/or subsequent restoration:

J-2	This corner position was not established during the original government survey.	K-2	GLO set quarter section post - Thomas Patterson, D.S. for Lewis Clawson, D.S. - 1839. Wit: Soft Maple 9" N 73° E 25 links Tamarack 10" S 72° W 8 links
-----	---	-----	--

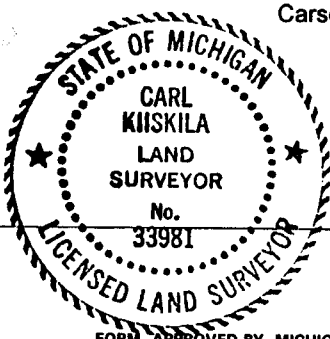
B. Description of corner evidence found and/or method applied in restoring or reestablishing corner:

J-2	Established the Center of Section 2 at the intersection of the north-south and east-west one-quarter lines per standard B.L.M. instructions for subdivision of a section.	K-2	Established the East quarter corner of Section 2 by doubling up the south sixteenth on the east line of Section 2 and the Southeast corner of Section 2 for departure, and placing it at an equal distance between the found sixteenth corners to the north and south for latitude.
-----	---	-----	---

C. Description of monument for corner and accessories established to perpetuate locating the position of the corner:

J-2	Set a 5/8" x 32" rerod with PS cap. Wit: Set nail in 10" Red Pine N 76° E 45.20' Set nail in 7" Red Pine S 56° E 48.59' Set nail in 4" Red Pine S 45° W 38.88' Set nail in 3" Maple N 40° W 40.55' 1-1/4" iron pipe East 8.85' Center of north-south gravel road & east-west trail road East 9'	K-2	Set standard DNR monument and carsonite marker post. Wit: Set nail in 12" Cedar S 46° W 16.97' Set nail in 3" Spruce N 31° W 57.33' Set nail in 4" Maple N 50° E 54.91' Set nail in 3" Spruce S 58° E 30.51' Centerline of north-south trail road East 4' Centerline of east-west trail road North 6' Carsonite post North 1'
-----	---	-----	--

Signed by Carl T Kiiskila
 Surveyor's Michigan License No. 33981



Date 8-12-99