

LAND CORNER RECORDATION CERTIFICATE
Filing Requirement of Act 74, Mich. P.A. 1970

For corners in
ALPENA
 (County)

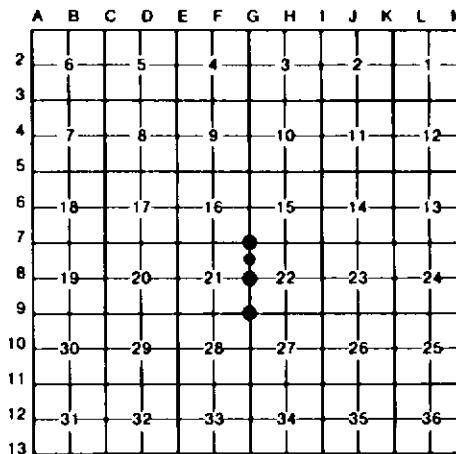
Located In:	Corner Code -##
T 31N R SE	6-7, 6-8,
T R	6-9
T R	
T R	
S 22 T R	3
S T R	
S T R	
S T R	

Register of Deeds Stamp & File Number

4. Lot No. _____, Recorded Plat _____
 5. Private Claims _____

I, CARL T. KIISKILA, in a field survey on SEPTEMBER 19, 19 95, do hereby certify that under requirements of P.A. 74, Michigan P.A. of 1970, the corner points mentioned in lines 1 and 2 above were in conformance with regulations and rules therefore as required in the current manual of survey instructions of the United States Department of the Interior, Bureau of Land Management or by a decree of a Court of Law and/or that the corner points mentioned in lines 3, 4 and 5 above were in conformance with the rules of the Michigan Board of Land Surveyors or by a Decree of a Court of Law; established, re-established, monumented, re-monumented, recovered, found as expressed below:

NOTE: Not more than 4 corners, all in the same town and range, may be recorded on this certificate.



A. Description of original monument and accessories and/or subsequent restoration:

G-8	G-9	G-7
(NO EVIDENCE OF G.L.D. CORNER, B.T.'S, LINE TREES OR TOPOGRAHY, AS B. CONT.-- TIE TO NEAREST 1/2 CALLED OUT IN G.L.D. LINE NOTES; UNLESS NOTED IN ITEM "B" BELOW.)	CH.); U.S. TIE TO THUNDER BAY RV. 9.00 CH'S N, (C-ENE), WITHIN ±30' (NOTE U.S. TIE TO NEAREST CH.); & U.S. TIE TO ENT. ALDER BOTTOM'S 16.00 CH'S & STREAM 17.60 CH'S W. (C-NNE, 6 LKS WD) WITHIN ±5' (U.S. STREAM TIE TO NEAREST 10 LK'S)	



B. Description of corner evidence found and/or method applied in restoring or reestablishing corner:

G-8	G-9	G-7	3
ACCEPTED FD 5/8" ROD FOR NW/4 COR SEC. 22. COR FITS 1992 CERT. OF SURVEY DATA BY PS, DUANE MACNEILL, #19237.	ACCEPTED FD 1/2" IRON ROD IN MON BOX FOR SW COR SEC 22. CORNER FITS MSHD(MDOT) 1967 HWY DATA.	ACCEPTED FD 2 1/2" PIPE AS NW COR S-22, SMOOTH WIRE (MOSTLY ON GROUND) N-S-E; NO REMAINING EVID OF USBT CED(STIP'S) & NO EVID OF U.S. CED(STIP S) FOR C.T.'S 218 LKS. S. & 106 LKS. EAST. HOWEVER, SEC COR AS FD & NOTED ABOVE DOES FIT U.S. TIE TO LEAVE SWP(C-E & W) OF 79.54-78.50 = 104 LKS, S. (COR FALLS ON HIGH GROUND), WITHIN ±15' (NOTE U.S. --SEE ABOVE-	ESTABLISHED THE SW COR OF THE NW/4 OF THE NW/4 OF SEC. 22 PER STANDARD BLM INSTRUCTIONS FOR SUBDIVISION OF A SECTION.

C. Description of monument for corner and accessories established to perpetuate locating the position of the corner:

G-8	G-9	G-7	3
FD 5/8" STEEL ROD. #POWER POLE N23°E 49.44' #24" SPRUCE N67°W 73.53' #GATE POST S84°E 6.71' #16"-18" TW. MAPLE S52°W 45.13'	FD 1/2" IRON ROD IN MON BOX. W. END CONC CULVERT, CHISELED "X" N22°W 57.35' #POWER POLE N18°E 112.38' MAIL BOX POST #17981 S75°E 86.13' #POWER POLE S20°W 71.81' SOUTH EDGE OF BLACKTOP IS SOUTH 10.3'	FD 2 1/2" O.D. PIPE (FLUSH W/GRD), OLD 2 1/2" SQ. CEDAR STAKE(12" OUT OF GRD) & 1/2" GUARD PIPE. SET CED POST. 12" BALSAM N24°W 36.2' 5" SPRUCE S41°W 33.1' 10" MAPLE S37°E 26.3' 4"-10" TW. MAPLE N81°E 45.5'	SET 5/8" x 32" REROD W/PS CAP. #4" ASH N08°E 7.7' 5" BALSAM N71°E 29.8' 6" BALSAM S03°E 15.7' 8" CEDAR S76°W 7.7' (NOTE 8" CEDAR IS CORNER POST OF FENCE LINE N-E) #NAILED DNR LOCATION TAG ON TREE.

*= OLD WIT.

*= MSHD WIT.

Signed by Carl T. Kiiskila Date 1-23-96

Surveyor's Michigan License No. 33981