

LAND CORNER RECORDATION CERTIFICATE

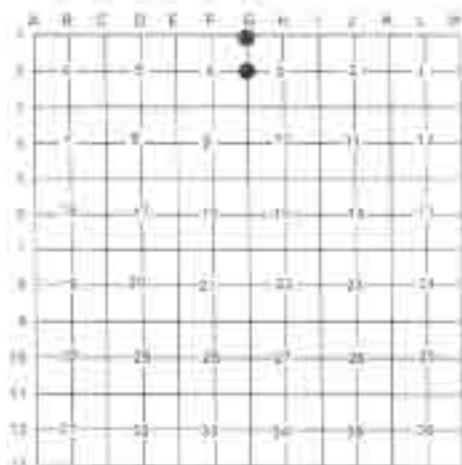
Filing Requirement of Act 74, Mich. PA 1970

For Corners in: Alpena (County)	Located in	Corner Code #
1. Public Land Survey	T <u>31N</u> R <u>8E</u>	G-1
	T <u>31N</u> R <u>8E</u>	G-2
2. Property Controlling in Section	S _____ T _____ R _____	_____
	S _____ T _____ R _____	_____
3. Miscellaneous Property in Section	S _____ T _____ R _____	_____
	S _____ T _____ R _____	_____
4. Lot No _____	Recorded Plat _____	
5. Private Claims _____		

Register of Deeds Stamp & File Number

I, Carl T. Kiskila, in a field survey on January 23, 2004, hereby state that when requirements of PA 74, Michigan PA of 1970, the corner points mentioned in lines 1 and 2 above were in conformance with regulations and rules therefore as required in the current manual of survey instructions of the United States Department of the Interior, Bureau of Land Management or by a decree of a Court of Law and/or that the corner points mentioned in lines 3, 4 and 5 above were in conformance with the rules of the Michigan Board of Land Surveyors or by a Decree of a Court of Law established, re-established, monumented, recovered, found as expressed below.

NOTE: Not more than 2 corners, all in the same town and range, may be recorded on this certificate.



A. Description of original monument and accessories and/or subsequent restoration:

- | | |
|--|---|
| G-1 G.L.O. Lewis Clawson 1839 set post for corner

1971 Don Marlett Found concrete monument. Set by Loyd Stringer. No Witnesses given.

1981 MDOT Found concrete monument
Wit: 9" Black Ash N43°E 62.35'
Fence Corner S06°E 7.29'
6" Black Ash S59°W 28.34' | G-2 G.L.O. Butler 1855 Re-established old quarter section
Wit: Beech 8" N49°E 27 links
Beech 5" S43°W 11 links

1981 MDOT Found 1/4" rod
Wit: 8" Scotch Pine N71°E 33.50'
7" Scotch Pine N86°E 45.02'
P. Pole S69°W 33.50' |
|--|---|

B. Description of corner evidence found and/or method applies in restoring or re-establishing corner:

- | | |
|------------------------------|---------------------|
| G-1 Found concrete monument. | G-2 Found 1/4" pipe |
|------------------------------|---------------------|

C. Description of monument for corner and accessories established to perpetuate locating the position of the corner:

- | | |
|---|--|
| G-1 Found concrete monument:
Wit: 6" Ash w/ tag #41922 S63°W 28.35'
5" Ash w/ tag #41922 S85°W 24.19'
8" Cedar S09°E 27.85'
4" Cedar N20°W 16.77' | G-2 Found 1 1/2" pipe:
5" Scotch Pine S85°E 38.41'
P. Pole S88°W 51.37'
4" Cedar Clump S23°E 95.27'
11" Scotch Pine S85°E 45.11' |
|---|--|

Signed by: Carl T. Kiskila
 Surveyor's Michigan License No.: 33981

Date: 3-22-04

