

LAND CORNER RECORDATION CERTIFICATE

Filing Requirement of Act 74, Mich. PA 1970

For Corners In:
Alpena
 (County)

		Located In		Corner Code #
1. Public Land Survey	T	31N	R 6E	G-3
	T		R	
2. Property Controlling in Section	S 12	T 31N	R 6E	2
	S	T	R	
3. Miscellaneous Property in Section	S	T	R	
	S	T	R	

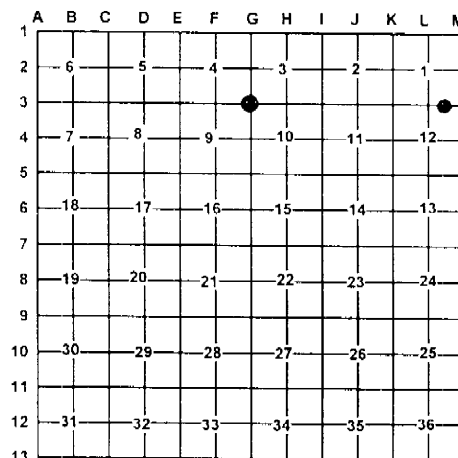
4. Lot No: _____ Recorded Plat: _____

5. Private Claims: _____

I, Carl T. Kiiskila, in a field survey on, June 4, 2003 do hereby state that under requirements of PA 74, Michigan PA of 1970, the corner points mentioned in lines 1 and 2 above were in conformance with regulations and rules therefore as required in the current manual of survey instructions of the United States Department of the Interior, Bureau of Land Management or by a decree of a Court of Law and/or that the corner points mentioned in lines 3, 4 and 5 above were in conformance with the rules of the Michigan Board of Land Surveyors or by a Decree of a Court of Law; established, re-established, monumented, recovered, found as expressed below:

NOTE: Not more than 2 corners, all in the same town and range, may be recorded on this certificate.

Register of Deeds Stamp & File Number



A. Description of original monument and accessories and/or subsequent restoration:

2- David B. Guthrie January 1995 certificate of survey shows he set a 1/2" iron rod for corner. G-3 G.L.O. Butler Ives 1855 Re-established old corner 3,4,9 and 10.
Wit: Cedar 18" N22°W 7 links
Cedar 16" S37°E 8 links

Wm Leroy 1892 County survey notes shows he found an old corner with a 3" stake at Northeast corner of a 4'X3' boulder.
 Wit: W. Pine 26 N64 1/4°W 52 3/4 links
 W. Pine 24 S19 1/2°E 39 links

Liber 1, page 146 Ronald Bisher 1981 Found 1 1/2" pipe for corner.
 Wit: 12" W. Pine N87°W 66.83'
 4" Cedar S83°E 43.20'
 4" Cedar S52°E 98.82'

B. Description of corner evidence found and/or method applies in restoring or re-establishing corner:

2- Found a 1/2" iron rod with P.S. cap #22435 as set by D. Guthrie. G-3 Found 1 1/2" pipe

C. Description of monument for corner and accessories established to perpetuate locating the position of the corner:

2- 1/2" iron rod with P.S. cap #22435	G-3 Found 1 1/2" pipe
Wit: 4" Maple S53°W 17.18'	Wit: 5" Cedar N61°E 41.27'
5" Twin Maple N53°W 14.64'	P. Pole S85°W 31.15'
5" Maple S15°E 11.08'	15" W. Pine N86°W 66.47'
8" Maple clump N81°E 70.96'	7" Cedar w/ Fabis cap S82°E 43.24'
Carsonite Post North 1±	

Signed by:

Carl T. Kiiskila

Date:

3-22-04

Surveyor's Michigan License No.:

33981

