

LAND CORNER RECORDATION CERTIFICATE

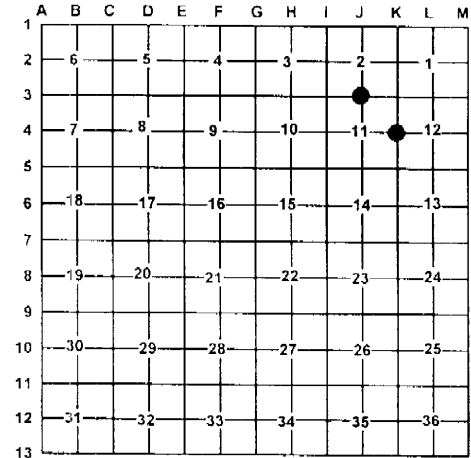
Filing Requirement of Act 74, Mich. PA 1970

For Corners In:			
Alpena (County)	Located In	Corner Code #	
1. Public Land Survey	T <u>31N</u> R <u>6E</u>	<u>K-4</u>	
	T <u>31N</u> R <u>6E</u>	<u>J-3</u>	
2. Property Controlling in Section	S _____ T _____ R _____	_____	
	S _____ T _____ R _____	_____	
3. Miscellaneous Property in Section	S _____ T _____ R _____	_____	
	S _____ T _____ R _____	_____	
4. Lot No: _____	Recorded Plat: _____		
5. Private Claims: _____			

Register of Deeds Stamp & File Number

I, Carl T. Kiiskila, in a field survey on June 21, 2003 do hereby state that under requirements of PA 74, Michigan PA of 1970, the corner points mentioned in lines 1 and 2 above were in conformance with regulations and rules therefore as required in the current manual of survey instructions of the United States Department of the Interior, Bureau of Land Management or by a decree of a Court of Law and/or that the corner points mentioned in lines 3, 4 and 5 above were in conformance with the rules of the Michigan Board of Land Surveyors or by a Decree of a Court of Law, established, re-established, monumented, recovered, found as expressed below:

NOTE: Not more than 2 corners, all in the same town and range, may be recorded on this certificate.



A. Description of original monument and accessories and/or subsequent restoration:

K-4 G.L.O. Butler Ives 1855 Set quarter section post equal distance from the old corners.
Wit: Maple 9 N57°W 18 links
Hemlock 6 S34°E 23 links

J-3 G.L.O. Butler Ives 1855 Set quarter section post
Wit: Hemlock 10 N25°E 4 links
Maple 16 S48°W 32 links

Earl T. Lewis 1985 certificate of survey shows he set a 1/2" rod for the East 1/4 corner of section 11.
Wit: 36" White Pine S45°E 52.1'
30" White Pine N35°E 39.0'

Earl T. Lewis 1985 Certificate of Survey shows he set a 1/2" rod for the North 1/4 corner of section 11.
Wit: 10" Aspen S85°W 6.5'
8" Aspen S10°E 13.3'
8" Aspen N85°E 4.6'

B. Description of corner evidence found and/or method applies in restoring or re-establishing corner:

K-4 Set 1" X 48" pipe with DNR aluminum cap over found 1/2" rod.

J-3 Found a 1/2" rod with P.S. cap #27452 fitting Earl T. Lewi's distance East and West.

C. Description of monument for corner and accessories established to perpetuate locating the position of the corner:

K-4 Set 1" X 48" pipe with DNR aluminum cap.
Wit: 12" Twin Maple N87°W 13.17'
28" W. Pine S52°E 40.19'
41" W. Pine N30°E 53.57'
10" Maple S12°W 60.47'
Carsonite Post North 1±

J-3 1/2" rod with P.S. cap #27452
Wit: 7" Spruce N82°W 29.91'
8" Spruce N08°E 17.29'
3" Balsam S31°W 11.02'
3" W. Pine S80°E 34.64'

Signed by:

Carl T. Kiiskila

Date:

3-22-04

Surveyor's Michigan License No.:

33981

