

MAY 1 3 1997

1996 ALPENA COUNTY REMONUMENTATION CORNER LIBER

2 PAGE 38

COMMISSION

LAND CORNER RECORDATION CERTIFICATE

Filing Requirement of Act 74, Mich. P.A. 1970

For corners in

Alpena

(County)

Located In:

Corner Code #

RECORDED ALPENA COUNTY MI.

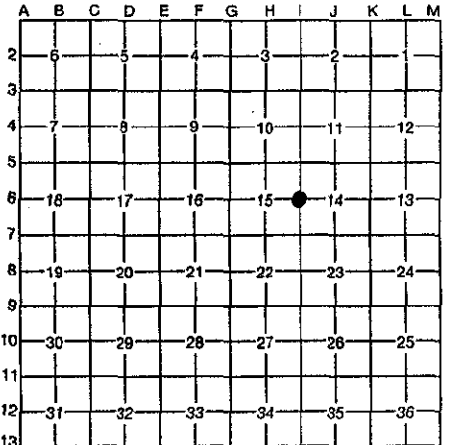
JUL 22 11 07 AM '96

Kathryn M. P. ... REGISTER OF DEEDS

Register of Deeds Stamp & File Number

1. Public Land Survey	T	31N	R	8E	I-6, (E $\frac{1}{2}$, 15)✓
	T		R		Alpena Twp.
	T		R		
	T		R		
2. Property Controlling in Section	S		T	R	
	S		T	R	
3. Miscellaneous	S		T	R	
Property in Section	S		T	R	

- 4. Lot No. _____, Recorded Plat _____
- 5. Private Claims _____



I, Thomas L. Fabis, in a field survey on May 9, 1996, do hereby certify that under requirements of P.A. 74, Michigan P.A. of 1970, the corner points mentioned in lines 1 and 2 above were in conformance with regulations and rules therefore as required in the current manual of survey instructions of the United States Department of the Interior, Bureau of Land Management or by a decree of a Court of Law and/or that the corner points mentioned in lines 3, 4 and 5 above were in conformance with the rules of the Michigan Board of Professional Surveyors or by a Decree of a Court of Law; established, re-established, monumented, re-monumented, recovered, found as expressed below:

NOTE: Not more than 4 corners, all in the same town and range, may be recorded on this certificate.

A. Description of original monument and accessories and/or subsequent restoration:

- 1855: G.L.O. Resurvey by Josiah Knauer - Set post & referenced: (Beech 4 - N77E - 14 lks., Balsam 4 - N70W - 9 lks.)
- 1889: County Survey by Wm. H. LeRoy - Visited corner.
- 1983: Survey (W.O.4-6374) by David Guthrie of R.S. Scott Assoc.-Found 1 $\frac{1}{2}$ " Iron Pipe & witnessed.
- 1984: Survey (Liber 2 Page 224) by Duane MacNeill-Visits corner & measures to I-7.
- 1988: Survey (W.O.4-7646) by David Guthrie of R.S.Scott Assoc.-Found 1" Pipe & witnessed.
- 1991: Survey (W.O.4-8348) by David Guthrie of R.S.Scott Assoc.-Found 1" Pipe & witnessed.
- 1993: Survey (Liber 2 Page 694) by Dean Gears of Wilcox Assoc., Inc.-Found 1" Pipe & witnessed.

B. Description of corner evidence found and/or method applied in restoring or reestablishing corner:

- 1996: Found 1" Pipe and 3 existing witnesses with tags #27452.

The position of this corner is compatible with county and local surveys and is accepted as a careful and faithful perpetuation of the position of the original corner.

P.A. 345 ALPENA COUNTY
PEER APPROVED 5/14/96

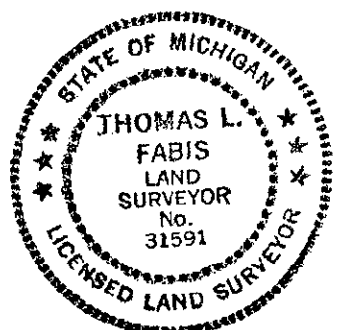
Det. B. Lee

C. Description of monument for corner and accessories established to perpetuate locating the position of the corner:

- 1996: Set 1/2" iron rod inside existing 1" pipe and capped with a 3" dia. aluminum cap, stamped to identify the corner.

Reestablished witnesses are:

- Existing tag #27452 in P. Pole - N80W - 29.76'
- Existing tag #27452 in P. Pole - S60E - 55.92'
- Existing tag #27452 in P. Pole - S66W - 65.70'
- Set tag #31591 in 2" Spruce - S10E -119.84'



Signed by Thomas L. Fabis

Date July 17, 1996

Surveyor's Michigan License No. 31591