

**SURVEY & REMONUMENTATION COMMISSION**  
**APR 06 1995**

RECORDED  
 ALPENA COUNTY MI.

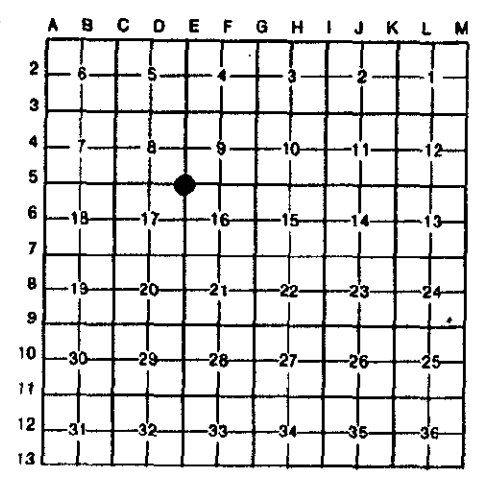
**LAND CORNER RECORDATION CERTIFICATE**  
 Filing Requirement of Act 74, Mich. P.A. 1970

DEC 8 10 11 AM '94  
*Myriam A. Johnston*  
 REGISTER OF DEEDS

For corners in Alpena (County) Located In: \_\_\_\_\_ Corner Code # \_\_\_\_\_

1. Public Land Survey	T <u>32N</u> R <u>6E</u>	<u>E-5 (NW, 16)</u>
	T _____ R _____	<u>Long Rapids Twp.</u>
	T _____ R _____	_____
	T _____ R _____	_____
2. Property Controlling in Section	S _____ T _____ R _____	_____
	S _____ T _____ R _____	_____
3. Miscellaneous Property in Sec.	S _____ T _____ R _____	_____
	S _____ T _____ R _____	_____
4. Lot No. _____, Recorded Plat _____		
5. Private Claims _____		

Register of Deeds Stamp & File Number



Thomas L. Fabis, in a field survey on May 25, 19 94, do hereby certify that under requirements of P.A. 74, Michigan P.A. of 1970, the corner points mentioned in lines 1 and 2 above were in conformance with regulations and rules therefore as required in the current manual of survey instructions of the United States Department of the Interior, Bureau of Land Management or by a decree of a Court of Law and/or that the corner points mentioned in lines 3, 4 and 5 above were in conformance with the rules of the Michigan Board of Land Surveyors or by a Decree of a Court of Law; established, re-established, monumented, re-monumented, recovered, found as expressed below:

NOTE: Not more than 4 corners, all in the same town and range, may be recorded on this certificate.

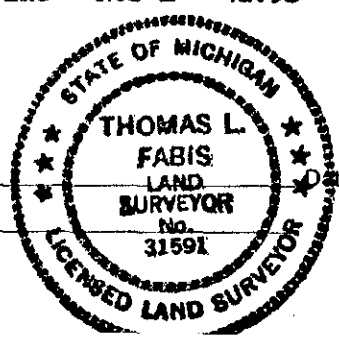
- A. Description of original monument and accessories and/or subsequent restoration:
- 1856: G.L.O. Resurvey by Josiah Knauer - set post and referenced: (Beach 16 - S15°W - 35 lks., Beech 7 - N43°E - 26 lks.).
  - 1891: County Survey by Wm. H. LeRoy - Set 4" sq. cedar stake & referenced.
  - 1990: Survey by Ronald Bischer - Found iron and referenced.

- B. Description of corner evidence found and/or method applied in restoring or reestablishing corner:
- 1994: Found heavy nail and 3 existing witnesses: Bischer tag on Anchor Pole - N55°W - 54.74' and Tele. Pole - N25°E - 73.59' as per 1990 survey by Ronald Bischer. Tag #22435 on 6" Aspen - S 50°E - 57.74'. This corner position is compatible with county and local surveys and is accepted as a careful and faithful perpetuation of the position of the original corner.

- C. Description of monument for corner and accessories established to perpetuate locating the position of the corner:
- 1994: Removed existing corner material and set ½" iron rod with 3" dia. aluminum cap, stamped to identify the corner, inside a Monument Box.  
 Reestablished witnesses are:  
 Exis. tag #22428 in Anchor Pole - N55°W - 54.75'  
 Exis. tag #22428 in Tele Pole - N25°E - 73.59'  
 Exis. tag #22435 in 6" Aspen - S50°E - 57.74'  
 Set tag #31591 in 4" W. Pine - N85°E - 41.93'

P.A. 345 ALPENA COUNTY  
 PEER APPROVED Oct. 27, 1994  
*Det. P. Luba*

Signed by Thomas L. Fabis  
 Surveyor's Michigan License No. 31591



Dec. 5, 1994