

# LAND CORNER RECORDATION CERTIFICATE

Filing Requirement of Act 74, Mich. PA 1970

For Corners In: Alpena (County)	Located In	Corner Code #
1. Public Land Survey	T <u>32N</u> R <u>6E</u>	<u>K-9</u>
2. Property Controlling in Section	S <u>25</u> T <u>32N</u> R <u>6E</u>	<u>3</u>
3. Miscellaneous Property in Section	S _____ T _____ R _____	_____
	S _____ T _____ R _____	_____

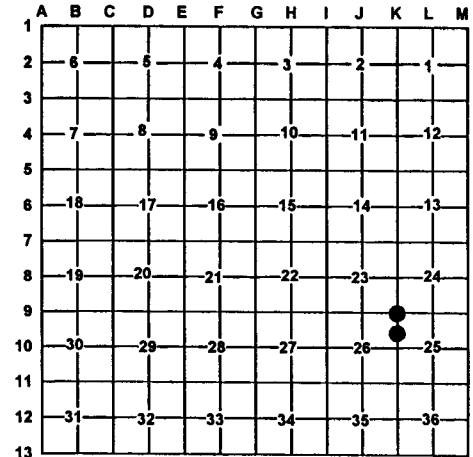
Register of Deeds Stamp & File Number

4. Lot No: \_\_\_\_\_ Recorded Plat: \_\_\_\_\_

5. Private Claims: \_\_\_\_\_

I, Carl T. Kiiskila, in a field survey on September 15, 1999 do hereby state that under requirements of PA 74, Michigan PA of 1970, the corner points mentioned in lines 1 and 2 above were in conformance with regulations and rules therefore as required in the current manual of survey instructions of the United States Department of the Interior, Bureau of Land Management or by a decree of a Court of Law and/or that the corner points mentioned in lines 3, 4 and 5 above were in conformance with the rules of the Michigan Board of Land Surveyors or by a Decree of a Court of Law; established, re-established, monumented, recovered, found as expressed below:

**NOTE: Not more than 2 corners, all in the same town and range, may be recorded on this certificate.**



**A. Description of original monument and accessories and/or subsequent restoration:**

K-9 GLO Josiah Knauer D.S.- July 1856  
Set post corner of sections 23,24,25 and 26  
Wit: 8" Tamarack N48°W 23 links  
10" Tamarack S19°E 62 links

3- This corner position was not established during the original government survey.

Wm. H. LeRoy, May 1935, Page 244, county survey notes set 6"X6" concrete monument for corner.

**B. Description of corner evidence found and/or method applies in restoring or re-establishing corner:**

K-9 Found 1/2" iron rod in concrete fitting Wm H. LeRoy distance south. Raised concrete monument with 5/8" X 12" rerod.

3- Established the southwest corner of northwest quarter of the northwest quarter of section 25 per standard BLM instructions for the subdivision of a section.

**C. Description of monument for corner and accessories established to perpetuate locating the position of the corner:**

K-9 5/8" X12" rerod over concrete monument  
Wit: Steel fence post S35°E 33.00'  
Steel fence post N38°E 32.88'  
Telephone pedestal N58°W 35.81'  
Steel fence post S42°W 57.72'  
Carsonite post East 33.0'  
Centerline of N-S & W roads.

3- Set 5/8"X32" rerod with cap PS#33981  
Wit: Utility pole N58°W 31.87'  
4" Scotch pine S53°W 34.52'  
4" Scotch pine S28°E 43.19'  
8" Scotch pine N60°E 49.71'  
Centerline of N-S road East 3'  
Carsonite post East 35'

Signed by: Carl T. Kiiskila  
Surveyor's Michigan License No.: 33981

Date: 11-23-99

