

JAN 25 2001

2000 ALPENA COUNTY REMONUMENTATION CORNER

SECTION

LAND CORNER RECORDATION CERTIFICATE
Filing Requirement of Act 74, Mich. P.A. 1970

For corners in

Alpena
(County)

Located in:

Corner Code #



L-2 P-293
08/02/2000 10:05
Page: 1 of 1

1. Public Land Survey

T32N R 7E
T R
T R
T R

G-4
Maple Ridge Twp.

2. Property Controlling in Section

S T R
S T R

3. Miscellaneous Property in Sec.

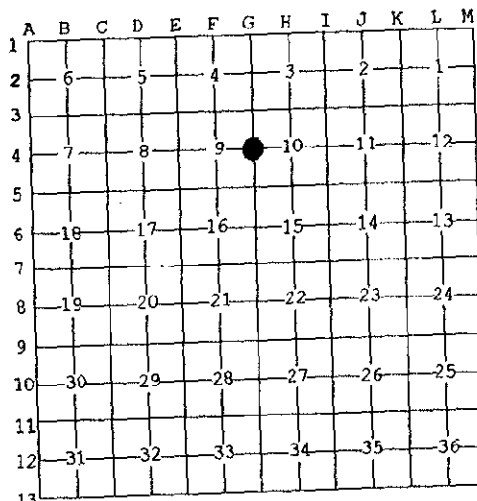
S T R
S T R

Register of Deeds Stamp & File Number

4. Lot No. _____, Recorded Plat _____

5. Private Claims _____

I, Thomas L. Fabis, in a field survey on April 13 2000 do hereby state that under requirements of P.A. 74, Michigan P.A. of 1970, the corner points mentioned in lines 1 and 2 above were in conformance with regulations and rules therefore as required in the current manual of survey instructions of the United States Department of the Interior, Bureau of Land Management or by a decree of a Court of Law and for that the corner points mentioned in lines 3, 4 and 5 above were in conformance with the rules of the Michigan Board of Land Surveyors or by a Decree of a Court of Law; established, re-established, monumented, recovered, found as expressed below:



NOTE: Not more than 2 corners, all in the same town and range, may be recorded on this certificate.

A. Description of original monument and accessories and/or subsequent restoration:

1855: G.L.O. Resurvey Josiah Knauer set post & referenced: Sugar 7 S68E 14 links, Beech 8 N81 1/2 W 34 links.

B. Description of corner evidence found and/or method applied in restoring or reestablishing corner:

2000: Found 2" Gas Pipe 2' East of gravel road centerline, corner fence post to the West and fence line to the East. No existing witnesses.

The position of this corner is compatible with the occupation lines in this area and is accepted as a careful and faithful perpetuation of the position of the original corner.

C. Description of monument for corner and accessories established to perpetuate locating the position of the corner:

2000: Removed existing 2" pipe and replaced it with a 1/2" iron rod and a 3" dia. alum. cap stamped to identify the corner. Established witnesses:

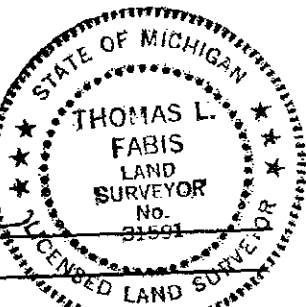
- Fe. Cor. Post West 28.73
- 6" Basswood N20E 56.22
- 3" Apple S40E 31.07
- P. Pole S30W 74.15

P.A. 345 ALPENA COUNTY
PEER APPROVED 7-5-2000
D.D.B. Cur

Signed by

Thomas L. Fabis

Surveyor's Michigan License No. 31591



Date July 31, 2000