

# LAND CORNER RECORDATION CERTIFICATE

Filing Requirement of Act 74, Mich. PA 1970

For Corners In:  
Alpena Located In \_\_\_\_\_ Corner Code # \_\_\_\_\_  
 (County)

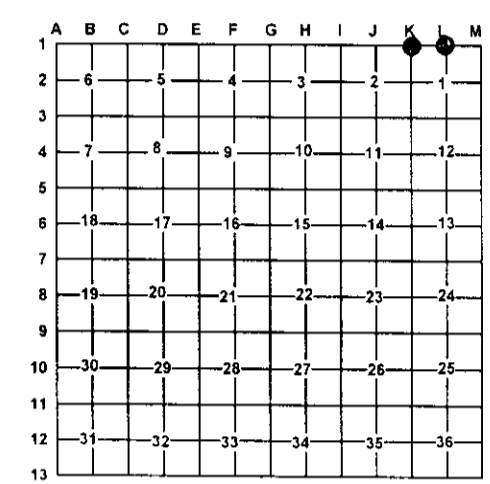
1. Public Land Survey	T	<u>32N</u>	R	<u>8E</u>	<u>L-1</u>
	T	<u>32N</u>	R	<u>8E</u>	<u>K-1</u>
2. Property Controlling in Section	S	_____	T	_____	_____
	S	_____	T	_____	_____
3. Miscellaneous Property in Section	S	_____	T	_____	_____
	S	_____	T	_____	_____

Register of Deeds Stamp & File Number

4. Lot No: \_\_\_\_\_ Recorded Plat: \_\_\_\_\_

5. Private Claims: \_\_\_\_\_

I, Carl T. Kiiskila, in a field survey on January 19, 2000 do hereby state that under requirements of PA 74, Michigan PA of 1970, the corner points mentioned in lines 1 and 2 above were in conformance with regulations and rules therefore as required in the current manual of survey instructions of the United States Department of the Interior, Bureau of Land Management or by a decree of a Court of Law and/or that the corner points mentioned in lines 3, 4 and 5 above were in conformance with the rules of the Michigan Board of Land Surveyors or by a Decree of a Court of Law; established, re-established, monumented, recovered, found as expressed below:



**NOTE: Not more than 2 corners, all in the same town and range, may be recorded on this certificate.**

**A. Description of original monument and accessories and/or subsequent restoration:**

L-1 GLO- John Hodgson, D.S. April 1840  
 Set quarter section post  
 Wit: Hemlock 8 N61°E 3.5 links  
 Cedar 14 N16°W 17 links

K-1 GLO- John Hodson, D.S. April 1840  
 Set post corner section 35 and 36 in swamp.  
 Wit: Cedar 14 N49°W 23 links  
 Cedar 8 N56°E 11 links

Pages 1 and 2, County Survey Notes December 1908  
 Joseph W. McNeil found an old stake and both B.T.'s. Set large cedar stake and two N.W.T.'s.

Pages 11-13 County Survey Notes September 1905 Joseph W. McNeil ties to corner he previously set from N.B.T.'s. He found a large cedar stake.

**B. Description of corner evidence found and/or method applies in restoring or re-establishing corner:**

L-1 This corner was restored from one U.S. B.T. stump. We found a rotted 20" Cedar stump with a good notch facing in the appropriate direction. This distance fits J.W. McNeil's East-West distance reasonably well.

K-1 Found 3/4" iron pipe in mound of stones and square post fitting J.W. McNeil's distance South.

**C. Description of monument for corner and accessories established to perpetuate locating the position of the corner:**

L-1 Set DNR monument  
 Wit: 5" Balsam N57°E 2.35'  
 3" Cedar N05°E 12.52'  
 4" Balsam S88°W 17.81'  
 5" Balsam S02°W 15.90'  
 Center of power line East 55' ±  
 Probable original BT- Old Cedar Stump  
 N16°W 11.2'

K-1 3/4" Iron pipe in mound of stones and square cedar post  
 Wit: \*9" Cedar N30°E 11.86'  
 \*5" White Birch N74°W 9.18'  
 \*3" Ash S12°W 6.95'  
 4" Balsam S53°E 17.61'

\* Old witnesses by others

Signed by: Carl T. Kiiskila  
 Surveyor's Michigan License No.: 33981

Date: 12-10-03

