

LAND CORNER RECORDATION CERTIFICATE

Filing Requirement of Act 74, Mich. PA 1970

For Corners In:
 Alpena _____ Located In _____ Corner Code # _____
 (County)

1. Public Land Survey		T	32N	R	9E	A-4
		T	32N	R	9E	C-4
2. Property Controlling in Section	S	T		R		
	S	T		R		
3. Miscellaneous Property in Section	S	T		R		
	S	T		R		

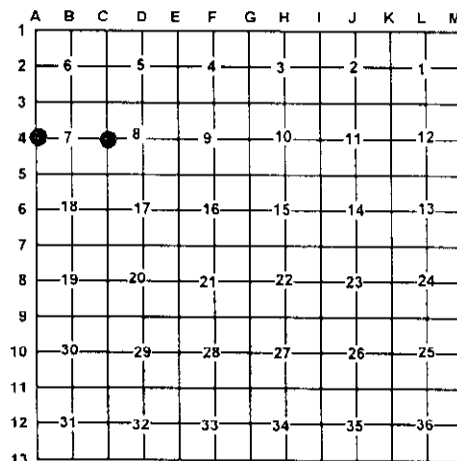
4. Lot No: _____ Recorded Plat: _____

5. Private Claims: _____

I, Carl T. Kiiskila, in a field survey on January 19, 2000 do hereby state that under requirements of PA 74, Michigan PA of 1970, the corner points mentioned in lines 1 and 2 above were in conformance with regulations and rules therefore as required in the current manual of survey instructions of the United States Department of the Interior, Bureau of Land Management or by a decree of a Court of Law and/or that the corner points mentioned in lines 3, 4 and 5 above were in conformance with the rules of the Michigan Board of Land Surveyors or by a Decree of a Court of Law; established, re-established, monumented, recovered, found as expressed below:

NOTE: Not more than 2 corners, all in the same town and range, may be recorded on this certificate.

Register of Deeds Stamp & File Number



A. Description of original monument and accessories and/or subsequent restoration:

A-4 GLO- John Hodgson, D.S., 1840
 Set quarter section post.
 Wit: Sugar 8 S22°W 12 links
 Sugar 8 N54°E 17 links

C-4 GLO- John Hodgson, D.S. April 1840
 Set quarter section post
 Wit: Cedar 4 N88°E 21 links
 Hemlock 7 S69°W 34 links

Pages 111 and 112 County Survey Notes November 1904
 Joseph W. McNeil found both original B.T.'s, set new 3" squared stake.

September 1975 R.S. Scott Engineering Inc. unrecorded certificate of survey shows an existing concrete monument for corner.

B. Description of corner evidence found and/or method applies in restoring or re-establishing corner:

A-4 Found 4" concrete monument fitting J.W. McNeil's and R.S. Scott's measurements in section 12. C-4 Found 1/2" capped rerod.

C. Description of monument for corner and accessories established to perpetuate locating the position of the corner:

A-4 Found 4" concrete monument
 Wit: 5" Beech N37°E 16.16'
 3" Balsam N25°W 21.23'
 8" Hemlock S45°W 17.39'
 7" Ash S57°E 18.70'

C-4 Found 1/2" Capped rerod
 Wit: *10" Cedar S33°W 19.92'
 *8" Cedar S48°E 27.97'
 *6" Cedar N02°E 17.61'
 7" Balsam N44°W 18.38'

* Old witnesses by others

Signed by: Carl T. Kiiskila
 Surveyor's Michigan License No.: 33981

Date: 12-10-03

