

**LAND CORNER RECORDATION CERTIFICATE**  
**Filing Requirement of Act 74, Mich. P.A. 1970**

For corners in

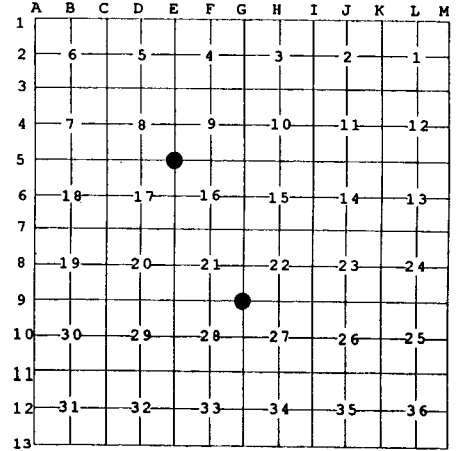
<u>Antrim</u> (County)	Located In:	Corner Code #
1. Public Land Survey	T <u>29N</u> R <u>5W</u>	<u>G-9</u>
2. Property Controlling in Section	S <u>    </u> T <u>    </u> R <u>    </u>	<u>E-5</u>
3. Miscellaneous Property in Sec.	S <u>    </u> T <u>    </u> R <u>    </u>	<u>    </u>

Register of Deeds Stamp & File Num

4. Lot No. \_\_\_\_\_, Recorded Plat \_\_\_\_\_

5. Private Claims \_\_\_\_\_

I, Carl T. Kiiskila, in a field survey on June 30, 19 98 do hereby state that under requirements of P.A. 74, Michigan P.A. of 1970, the corner points mentioned in lines 1 and 2 above were in conformance with regulations and rules therefore as required in the current manual of survey instructions of the United States Department of the Interior, Bureau of Land Management or by a decree of a Court of Law and /or that the corner points mentioned in lines 3, 4 and 5 above were in conformance with the rules of the Michigan Board of Land Surveyors or by a Decree of a Court of Law; established, re-established, monumented, recovered, found as expressed below:



**NOTE: Not more than 2 corners, all in the same town and range, may be recorded on this certificate.**

**A. Description of original monument and accessories and/or subsequent restoration:**

G-9 GLO set quarter section post - J. H. Mullett - 1839.  
 Wit: Cherry 12" S 69° E 7 links  
 Cherry 10" N 58° E 14 links

E-5 GLO set post - J. H. Mullett - 1839.  
 Wit: Sugar 16" S 40° E 17 links  
 Hemlock 18" N 42° E 26 links

Kenneth J. Ostling on June 17, 1957 reestablished this corner by double proportionate measurement.  
 Wit: 6" Aspen S 16° W 79 links

Consumers Power Co. in 1966 set a 1" pipe from evidence on the ground. Lake of the North Villa Plat Surveyor replaced the 1" pipe with a concrete plat monument c. 1970.

**B. Description of corner evidence found and/or method applied in restoring or reestablishing corner:**

G-9 Found a DNR monument fitting Kenneth J. Ostling's, RLS #10068, distances north and west well.

E-5 Found a concrete monument fitting the plat of Lake of the North Villa.

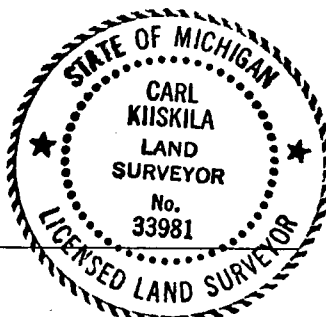
**C. Description of monument for corner and accessories established to perpetuate locating the position of the corner:**

G-9 Found DNR monument. Set carsonite marker post.  
 Wit: \* Nail set in 5" Poplar N 35° W 13.98'  
 \* Nail set in 7" Poplar S 78° W 2.92'  
 \*\* Nail set in 5" Poplar  
 dead with nail & tag S 48° E 2.52'  
 Set nail in 5" Poplar S 57° E 17.16'  
 Set nail in 4" Cherry N 58° E 19.74'

E-5 Found concrete monument. Set carsonite marker post.  
 Wit: Power pole South 24.77'  
 Set nail in 12" Maple S 41° E 64.73'  
 Set nail in 10" twin Beech S 82° E 83.12'  
 Set nail in 6" Elm N 54° E 65.43'  
 Set nail in 10" Maple N 80° W 93.77'  
 Angle iron S 67° W 18.20'  
 Carsonite post South 33'

\* (Old witness by others.)  
 \*\* (Witness by J.L.S., PS #26466.)

Signed by Carl T. Kiiskila  
 Surveyor's Michigan License No. 33981



Date 8-18-99