

**LAND CORNER RECORDATION CERTIFICATE**  
**Filing Requirement of Act 74, Mich. P.A. 1970**

For corners in

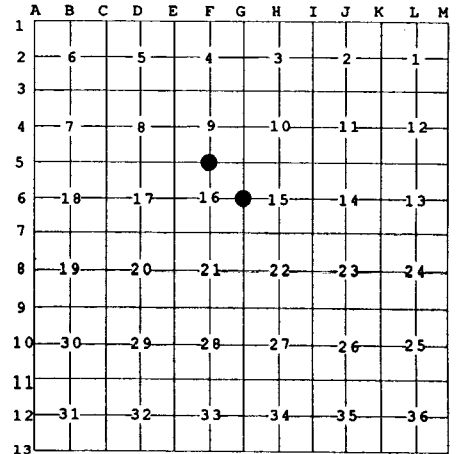
<u>Antrim</u> (County)	Located In:	Corner Code #
1. Public Land Survey	T <u>29N</u> R <u>5W</u>	<u>F-5</u>
	T <u>29N</u> R <u>5W</u>	<u>G-6</u>
2. Property Controlling in Section	S _____ T _____ R _____	_____
	S _____ T _____ R _____	_____
3. Miscellaneous Property in Sec.	S _____ T _____ R _____	_____
	S _____ T _____ R _____	_____

Register of Deeds Stamp & File Num

4. Lot No. \_\_\_\_\_, Recorded Plat \_\_\_\_\_

5. Private Claims \_\_\_\_\_

I, Carl T. Kiiskila, in a field survey on July 1, 19 98 do hereby state that under requirements of P.A. 74, Michigan P.A. of 1970, the corner points mentioned in lines 1 and 2 above were in conformance with regulations and rules therefore as required in the current manual of survey instructions of the United States Department of the Interior, Bureau of Land Management or by a decree of a Court of Law and/or that the corner points mentioned in lines 3, 4 and 5 above were in conformance with the rules of the Michigan Board of Land Surveyors or by a Decree of a Court of Law; established, re-established, monumented, recovered, found as expressed below:



**NOTE: Not more than 2 corners, all in the same town and range, may be recorded on this certificate.**

**A. Description of original monument and accessories and/or subsequent restoration:**

F-5 GLO set quarter section post - J. H. Mullett - 1839. Wit: Beech 12" S 83° W 11 links Sugar 16" N 44° E 20 links	G-6 GLO set quarter section post - J. H. Mullett - 1839. Wit: Beech 12" S 26° W 15 links Sugar 12" S 38° E 10 links
---	---

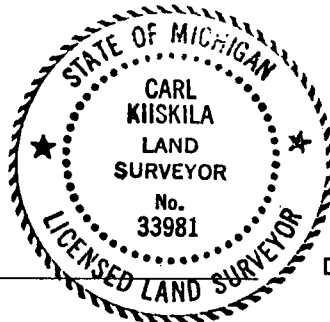
**B. Description of corner evidence found and/or method applied in restoring or reestablishing corner:**

F-5 Reestablished the quarter corner common to Section 9 and Section 16 by single proportionate measurement midway and online between section corners.	G-6 Reestablished the quarter corner common to Section 15 and Section 16 by single proportionate measurement midway and online between section corners.
--	---

**C. Description of monument for corner and accessories established to perpetuate locating the position of the corner:**

F-5 Set 1" x 32" iron pipe with aluminum DNR monument cap and set carsonite marker post. Wit: Set nail in 6" twin Cherry N 69° W 32.17' Set nail in 6" Cherry S 25° W 25.71' Set nail in 4" Maple S 20° E 32.52' Set nail in 4" Maple N 50° E 37.29' Center of power line West 194' ±	G-6 Set 1" x 32" iron pipe with aluminum DNR monument cap and set carsonite marker post. Wit: Set nail in 10" twin Maple N 72° E 40.17' Set nail in 10" Red Pine S 40° E 76.45' Set nail in 12" Maple N 35° W 42.57' Set nail in 6" Maple S 68° W 32.77' Carsonite marker post North 33'
--	---

Signed by Carl T. Kiiskila  
 Surveyor's Michigan License No. 33981



Date 8-18-99