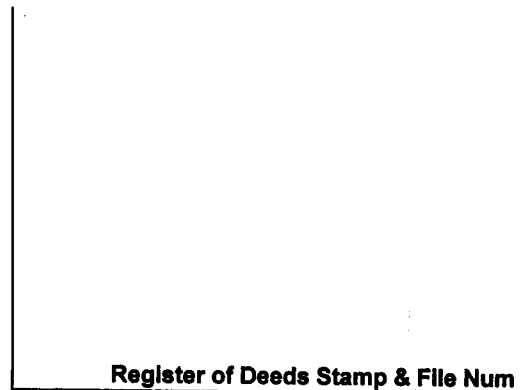


LAND CORNER RECORDATION CERTIFICATE
Filing Requirement of Act 74, Mich. P.A. 1970

For corners in

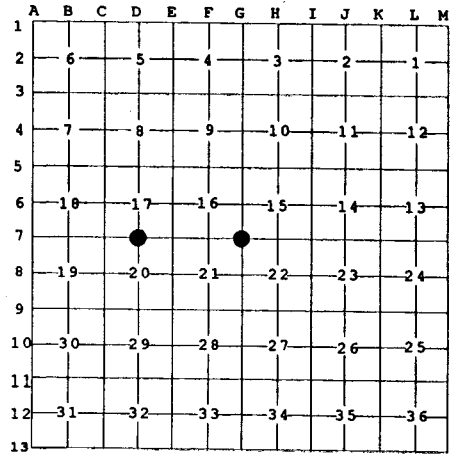
Antrim <small>(County)</small>	Located In:	Corner Code #
1. Public Land Survey	T 29N R 5W	D-7
	T 29N R 5W	G-7
2. Property Controlling in Section	S _____ T _____ R _____	_____
	S _____ T _____ R _____	_____
3. Miscellaneous Property in Sec.	S _____ T _____ R _____	_____
	S _____ T _____ R _____	_____



4. Lot No. _____, Recorded Plat _____

5. Private Claims _____

I, Carl T. Kiiskila, in a field survey on Sept. 28, 19 98 do hereby state that under requirements of P.A. 74, Michigan P.A. of 1970, the corner points mentioned in lines 1 and 2 above were in conformance with regulations and rules therefore as required in the current manual of survey instructions of the United States Department of the Interior, Bureau of Land Management or by a decree of a Court of Law and /or that the corner points mentioned in lines 3, 4 and 5 above were in conformance with the rules of the Michigan Board of Land Surveyors or by a Decree of a Court of Law; established, re-established, monumented, recovered, found as expressed below:



NOTE: Not more than 2 corners, all in the same town and range, may be recorded on this certificate.

A. Description of original monument and accessories and/or subsequent restoration:

- | | |
|--|---|
| <p>D-7 GLO set quarter section post - J.H. Mullett - 1839.
 Wit: Beech 12" N 71° E 15 links
 Sugar 14" S 61° W 19 links</p> <p>Kenneth J. Ostling, RLS # 10068, found a 1-½" bar for this corner on July 26, 1956. No witnesses were recorded.</p> | <p>G-7 GLO set post at the corner of Sections 15, 16, 21 & 22 - J.H. Mullett - 1839.
 Wit: Beech 12" N 68° W 37 links
 Birch 12" N 20° E 13 links</p> <p>Kenneth J. Ostling, RLS #10068, on May 17, 1966 found ¾" pipe at this corner.
 Wit: 7" Maple S 1° W 32.2'
 10" R. Pine N 20° E 30.1'</p> |
|--|---|

B. Description of corner evidence found and/or method applied in restoring or reestablishing corner:

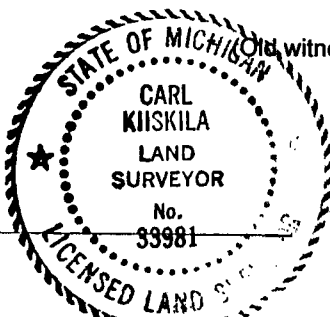
- | | |
|---|---|
| <p>D-7 Reestablished the South quarter corner of Section 17 per Kenneth J. Ostling's, RLS #10068, survey and notes of the south half of the township.</p> | <p>G-7 Reestablished the Southwest corner of Section 15 per Kenneth J. Ostling's, RLS #10068, survey and notes of the south half of the township.</p> |
|---|---|

C. Description of monument for corner and accessories established to perpetuate locating the position of the corner:

- | | |
|---|---|
| <p>D-7 Set a 5/8" x 32" rerod with PS cap in monument box and set carsonite marker post.
 Wit: Set nail in 8" Maple N 51° E 108.22'
 Set nail in 12" Maple N 36° W 95.04'
 Set nail in 7" twin Maple S 41° E 91.84'
 Set nail in 9" Maple S 5° W 99.10'
 Centerline of east-west blacktop road South 6.5'
 Carsonite post North 50'</p> | <p>G-7 Set a 5/8" x 32" rerod with PS cap in monument box.
 Wit: * Nail set in 20" Red Pine N 23° W 62.56'
 * Nail set in 9" Maple N 22° E 61.67'
 * Nail set in 10" twin Cherry S 53° W 82.13'
 * Nail set in 14" Red Pine S 15° E 56.73'
 ½" iron rod N 25° W 13.07'
 Centerline of north seasonal road West 3'</p> |
|---|---|

Signed by _____ (witnesses by others.)

Signed by Carl T. Kiiskila
 Surveyor's Michigan License No. 33981



Date 8-19-99