

LAND CORNER RECORDATION CERTIFICATE
Filing Requirement of Act 74, Mich. P.A. 1970

For corners in

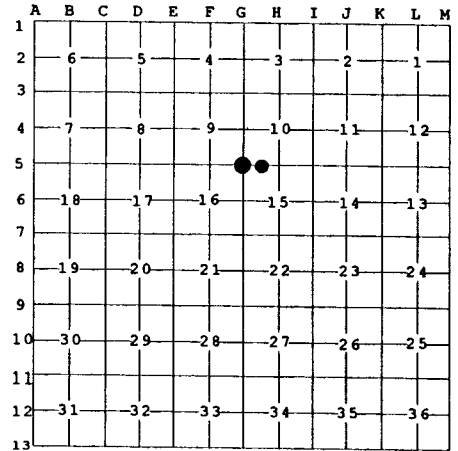
<u>Antrim</u> (County)	Located In:	Corner Code #
1. Public Land Survey	T 29N R 5W	G-5
	T _____ R _____	_____
2. Property Controlling in Section	S 15 T 29N R 5W	1
	S _____ T _____ R _____	_____
3. Miscellaneous Property in Sec.	S _____ T _____ R _____	_____
	S _____ T _____ R _____	_____

Register of Deeds Stamp & File Num

4. Lot No. _____, Recorded Plat _____

5. Private Claims _____

I, Carl T. Kiiskila, in a field survey on July 15, 19 98 do hereby state that under requirements of P.A. 74, Michigan P.A. of 1970, the corner points mentioned in lines 1 and 2 above were in conformance with regulations and rules therefore as required in the current manual of survey instructions of the United States Department of the Interior, Bureau of Land Management or by a decree of a Court of Law and /or that the corner points mentioned in lines 3, 4 and 5 above were in conformance with the rules of the Michigan Board of Land Surveyors or by a Decree of a Court of Law; established, re-established, monumented, recovered, found as expressed below:



NOTE: Not more than 2 corners, all in the same town and range, may be recorded on this certificate.

A. Description of original monument and accessories and/or subsequent restoration:

G-5 GLO set post for corner - J. H. Mullett - 1839.
 Wit: Beech 12" S 12° W 17 links
 Beech 12" N 68° W 19 links

1 - This position was not established during the original government survey.

Valley Ridge Heights West plat shows a concrete monument placed for the corner common to Sections 9, 10, 15 & 16.

B. Description of corner evidence found and/or method applied in restoring or reestablishing corner:

G-5 Found a concrete monument as set during the platting of Valley Ridge Heights West.

1 - Established the Northeast corner of the Northwest quarter of the Northwest quarter of Section 15 per standard B.L.M. instructions for the subdivision of a section.

C. Description of monument for corner and accessories established to perpetuate locating the position of the corner:

G-5 Found a concrete plat monument.
 Set a carsonite marker post.
 Wit: Centerline of blacktop road North 12.04'
 Set nail in 7" Cherry S 45° W 23.56'
 Set nail in 5" Cherry S 63° E 13.65'
 Concrete plat monument West 33.00'

1 - Set 5/8" x 32" rod with PS cap and carsonite marker post.
 Wit: Set nail in 9" Red Pine S 45° W 40.92'
 Set nail in 8" Red Pine S 14° E 70.91'
 Set nail in 9" Cherry N 21° W 17.21'
 Set nail in 7" Cherry S 68° E 63.89'

Signed by Carl T. Kiiskila
 Surveyor's Michigan License No. 33981



Date 8-18-99