

FEB 18 1999

185

Liber 00003 Page 0042

SECTION

LAND CORNER RECORDATION CERTIFICATE  
Filing Requirement of Act 74, Mich. P.A. 1970

For corners in

Antrim Located In: Elk Corner Code #  
(County) Rapids Twp.

1. Public Land Survey Sec. 29 T 29 R 9W E-9  
T     R          
T     R          
T     R        

2. Property Controlling S     T     R      
in Section S     T     R    

3. Miscellaneous S     T     R      
Property in Sec. S     T     R    

ANTRIM COUNTY MI.  
Register of Deeds  
Recorded

12-28-1998 10:20:08

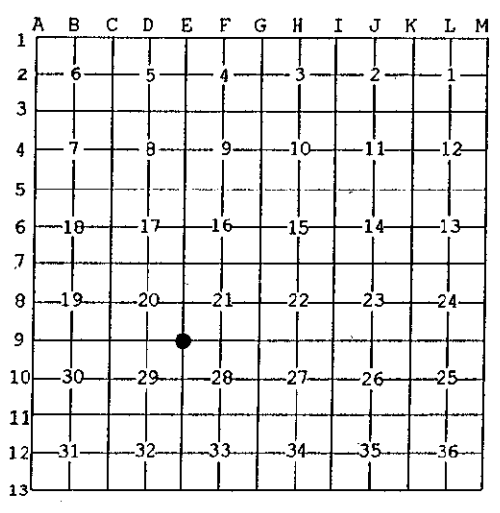
Wanda R. Conway  
REGISTER OF DEEDS

Register of Deeds Stamp & File Number

4. Lot No. \_\_\_\_\_, Recorded Plat \_\_\_\_\_  
5. Private Claims \_\_\_\_\_

I, Neil L. Way, in a field survey on Dec. 16, 1998 do hereby state that under requirements of P.A. 74, Michigan P.A. of 1970, the corner points mentioned in lines 1 and 2 above were in conformance with regulations and rules therefore as required in the current manual of survey instructions of the United States Department of the Interior, Bureau of Land Management or by a decree of a Court of Law and/or that the corner points mentioned in lines 3, 4 and 5 above were in conformance with the rules of the Michigan Board of Land Surveyors or by a Decree of a Court of Law; established, re-established, monumented, recovered, found as expressed below:

NOTE: Not more than 2 corners, all in the same town and range, may be recorded on this certificate.



A. Description of original monument and accessories and/or subsequent restoration:

Dec. 1856- GLO set post  
Oct. 1890- F. Church found iron bar  
Nov. 1965- P. Perla found iron rod and set concrete monument from original plat of Elk Rapids

B. Description of corner evidence found and/or method applied in restoring or reestablishing corner:

Found concrete monument as set by P. Perla in Nov. 1965

Ratified by peer group  
in accordance with  
P.O. 345  
Antrim Co. Chairman  
*Arthur L. Lennox*  
Arthur L. Lennox  
Nov. 18, 1998

C. Description of monument for corner and accessories established to perpetuate locating the position of the corner:

Set Antrim County Monument at found concrete monument

N60°W 10.46' Poplar 8"  
S25°E 34.95' White Pine 24"  
N88°E 19.12' Iron Pipe 3/4"  
N30°W 33.50' White Pine 10"



Signed by *Neil L. Way*  
Surveyor's Michigan License No. 28432

Date Dec. 17, 1998