

MICHIGAN  
DEPARTMENT OF CONSERVATION  
FORESTRY DIVISION

# LAND CORNER RECORD

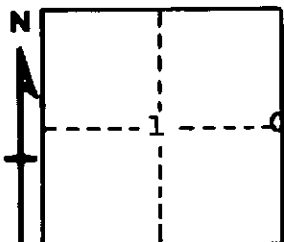
T. 30 N.R. 5 W  
T. 30 N.R. 6 W Antrim COUNTY

DESCRIPTION OF CORNER 1/4 Corner common to Sections 6-1

CORNER MONUMENT 1" pipe with 4" aluminum cap

DATE MONUMENT PLACED AND WITNESSED 10/25/61

WITNESSES TO CORNER.....



6" Cedar - S17W - 6.8 feet

7" Cedar - N42W - 12.8 feet

AND

CIRCLE CORNER REGISTERED

### DESCRIPTION IN DETAIL AS TO HOW CORNER WAS LOCATED AND IDENTIFIED OR RESTORED.

This corner was found while making a survey in this area. Found very good stake bottom in place, as restored by County Surveyor Hebdon in 1877 during a retracement of this township. One U.S. bearing tree in place, badly rotted, with faint evidence of axe marks. Checks Hebdon's record for river crossing. A good original corner.

SURVEYOR'S SEAL

SIGNED *Kenneth J. Ostling* DATE 11/13/61  
REGISTERED LAND SURVEYOR