

FEB 22 1995

COMMISSION

STAR

LAND CORNER RECORDATION CERTIFICATE  
Filing Requirement of Act 74, Mich. P.A. 1970

ANTRIM COUNTY  
RECEIVED FOR RECORD  
DEC 6 9 22 AM '95

Wanda R. Conway  
REGISTER OF DEEDS

For corners in

ANTRIM  
(County)

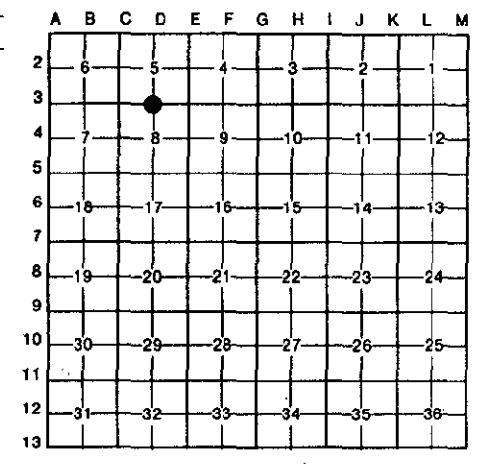
Located In:

Corner Code: #

- 1. Public Land Survey      T 30N R 5W      D-3
- T \_\_\_\_\_ R \_\_\_\_\_
- T \_\_\_\_\_ R \_\_\_\_\_
- T \_\_\_\_\_ R \_\_\_\_\_
- 2. Property Controlling    S \_\_\_\_\_ T \_\_\_\_\_ R \_\_\_\_\_
- in Section               S \_\_\_\_\_ T \_\_\_\_\_ R \_\_\_\_\_
- 3. Miscellaneous           S \_\_\_\_\_ T \_\_\_\_\_ R \_\_\_\_\_
- Property in Sec.         S \_\_\_\_\_ T \_\_\_\_\_ R \_\_\_\_\_

Register of Deeds Stamp & File Number

- 4. Lot No. \_\_\_\_\_, Recorded Plat \_\_\_\_\_
- 5. Private Claims \_\_\_\_\_



I, NEIL L. WAY, in a field survey on NOV. 8, 19 95, do hereby certify that under requirements of P.A. 74, Michigan P.A. of 1970, the corner points mentioned in lines 1 and 2 above were in conformance with regulations and rules therefore as required in the current manual of survey instructions of the United States Department of the Interior, Bureau of Land Management or by a decree of a Court of Law and/or that the corner points mentioned in lines 3, 4 and 5 above were in conformance with the rules of the Michigan Board of Land Surveyors or by a Decree of a Court of Law; established, re-established, monumented, re-monumented, recovered, found as expressed below:

NOTE: Not more than 4 corners, all in the same town and range, may be recorded on this certificate.

A. Description of original monument and accessories and/or subsequent restoration:  
D-3

GLO SET POST JULY 1839, ELM 12, S81E 10L ELM 14, N46E 14L  
CHURCH SET POST MPOL FND NO STK OR WITS JUNE 9, 1885  
SUGAR 18 N40 1/2 W 26, SUGAR 16 S7W 12  
CHURCH FND HIS COR JULY 21ST 1914 SUGAR 18 N6 1/2W 30.5

B. Description of corner evidence found and/or method applied in restoring or reestablishing corner:  
D-3

FND 1/2" X 18" REROD OVER 1 1/2" IRON PIPE (18" DOWN) IN CENTERLINE ROAD. IN HARMONY WITH CHURCHES DISTANCES EAST & WEST.

C. Description of monument for corner and accessories established to perpetuate locating the position of the corner:  
D-3

SET BERSTEN MONUMENT WITH CAP WITH REROD & IRON PIPE BELOW.

- N35E 1/2" REROD 21.42'
- N42W 1/2" REROD 27.80'
- S42E 1/2" REROD 25.15'
- S51W 1/2" REROD 23.63'

Ratified by Peer Group  
in accordance with  
P.O. 345:  
Chairman Arthur L. Lennox  
Date: Oct. 26, 1995



Signed by Neil L. Way Date 12-1-1995  
Surveyor's Michigan License No. 28432

002 289