

MICHIGAN
DEPARTMENT OF CONSERVATION
FORESTRY DIVISION

LAND CORNER RECORD

T. 30 N.R. 6 W.

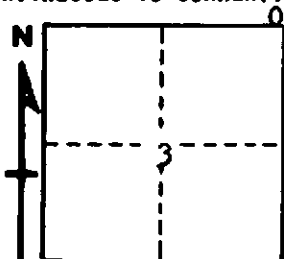
Antrim COUNTY

DESCRIPTION OF CORNER Closing corner common to Sections 2 - 3 on north boundary of T30NR6W

CORNER MONUMENT Set 1" pipe with 4" aluminum cap

DATE MONUMENT PLACED AND WITNESSED June 29, 1962

WITNESSES TO CORNER.....



10" Basswood S 18 W 17.6'

7" H. Maple N 83 W 30.8'

AND

CIRCLE CORNER REGISTERED

DESCRIPTION IN DETAIL AS TO HOW CORNER WAS LOCATED AND IDENTIFIED OR RESTORED.

This corner was restored by proportionate measurement while making a survey of the Third Correction Line. See map and minutes of survey for further information on corner along this line.

SURVEYOR'S SEAL

SIGNED

Kenneth Ostling
REGISTERED LAND SURVEYOR

DATE July 10, 1962