

MICHIGAN
DEPARTMENT OF CONSERVATION
FORESTRY DIVISION

LAND CORNER RECORD

T. 30 N.R. 6 W.

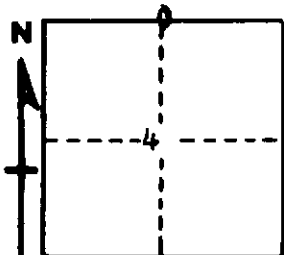
Antrim COUNTY

DESCRIPTION OF CORNER 1/4 corner on north side Section 4

CORNER MONUMENT Set 1" pipe with 4" brass cap

DATE MONUMENT PLACED AND WITNESSED June 28, 1962

WITNESSES TO CORNER.....



CIRCLE CORNER REGISTERED

7" H. Maple S 42 E 4.2'

10 H. Maple S 69 W 36.6'

AND

DESCRIPTION IN DETAIL AS TO HOW CORNER WAS LOCATED AND IDENTIFIED OR RESTORED.

This corner was restored while making a survey in this area. Found a small gauge RR rail which we conclude was intended to mark this 1/4 corner, very probably a restoration of the corner as established by Hebdon in 1877. Conforms very well with the Hebdon record for bearing on measurement to town corner.

Set our corner at same longitude as RR iron, but about 49 links north at the latitude prescribed by the south boundary of T31NR6W.

See map and minutes of survey for more information on our treatment of the correction line.

SURVEYOR'S SEAL

SIGNED Kenneth J. Ostling DATE July 10, 1962

REGISTERED LAND SURVEYOR