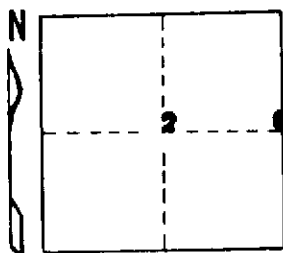


STATE OF MICHIGAN
DEPARTMENT
OF
NATURAL RESOURCES

LAND CORNER RECORD

ANTRIM COUNTY
T 31 N R 5 W

DESCRIPTION OF CORNER E 1/4 corner, Sec. 2
CORNER MONUMENT Set DNR Monument
DATE MONUMENT PLACED AND WITNESSED 10-21-71
WITNESSES TO CORNER..... 6" Hemlock N 30 W 18.1'

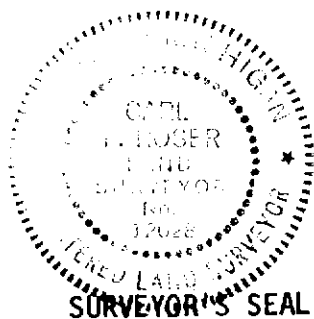


6" Cedar S 75 E 18.2'
9" Hemlock S 9 W 21.3'
AND

CIRCLE CORNER REGISTERED

DESCRIPTION IN DETAIL AS TO HOW CORNER WAS LOCATED AND IDENTIFIED OR RESTORED.

Restored corner in old E-W fence on straight line between section corner 1/2 mile N. and Section corner 1/4 miles South. This fits distance S of section corner to North per old survey of record at Charlevoix County Reg. of Deeds, Book 8, dated Oct. 1894. U. S. Survey ran their line straight North three miles from the center of the Top.



SURVEYOR'S SEAL

DISTRIBUTION:

SIGNED

Carl F. Rose DATE 10-28-71
REGISTERED LAND SURVEYOR 12028

County Courthouse
Area Forester (Regions I & II)
District or Region Surveyor
Forestry Div., Lansing

R 4047
Rev. 10/68