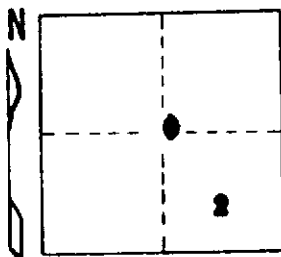


STATE OF MICHIGAN
DEPARTMENT
OF
NATURAL RESOURCES

LAND CORNER RECORD

ANTRIM COUNTY
T 31 N R 8 W

DESCRIPTION OF CORNER Center of Section 2
CORNER MONUMENT Set 1"x30" Pipe (flush)
DATE MONUMENT PLACED AND WITNESSED 11-10-71
WITNESSES TO CORNER..... 7" Elm N 9 E 72.81'

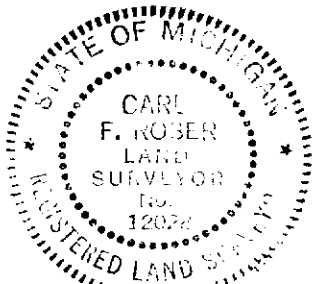


8" Maple S 86 W 23.24'
7" Maple S 11 E 38.58'
AND Ctr. N-S US-131 (Cons.Part.) Due E 94'
Old line fence to East Due S 48'

CIRCLE CORNER REGISTERED

DESCRIPTION IN DETAIL AS TO HOW CORNER WAS LOCATED AND IDENTIFIED OR RESTORED.

Established corner per standard M.M. instructions. Corner falls in center of old N-S dist road grade.



SURVEYOR'S SEAL

SIGNED Carl F. Roser DATE 11-17-71
REGISTERED LAND SURVEYOR 12028

DISTRIBUTION:

County Courthouse
Area Forester (Regions I & II)
District or Region Surveyor
Forestry Div., Lansing

R 4047
Rev. 10/68