

✓

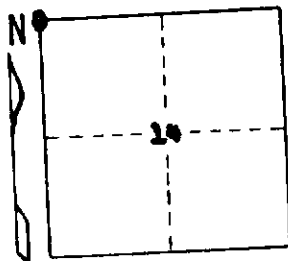
STATE OF MICHIGAN
DEPARTMENT
OF
NATURAL RESOURCES

LAND CORNER RECORD

ANTRIM COUNTY
T 31 N R 5 W

DESCRIPTION OF CORNER NW corner, Section 14
 CORNER MONUMENT Added DNR Monument
 DATE MONUMENT PLACED AND WITNESSED 10-14-71
 WITNESSES TO CORNER.....

<u>P. Pole</u>	<u>N 18 W</u>	<u>124.00'</u>
<u>P. Pole</u>	<u>S 14 W</u>	<u>148.70'</u>
<u>3/4" Pipe</u>	<u>Due W</u>	<u>18.8'</u>
AND <u>3/4" Pipe</u>	<u>Due E</u>	<u>25.4'</u>
<u>Ctr. N-S Road</u>	<u>Due E</u>	<u>3'</u>



CIRCLE CORNER REGISTERED

DESCRIPTION IN DETAIL AS TO HOW CORNER WAS LOCATED AND IDENTIFIED OR RESTORED.

Found 1/2" pipe over painted stone as recovered by M.S.H.D. in 1962.



SURVEYOR'S SEAL

SIGNED Carl F. Rose DATE 10-21-71
 REGISTERED LAND SURVEYOR 12028

DISTRIBUTION:

County Courthouse
 Area Forester (Regions I & II)
 District or Region Surveyor
 Forestry Div., Lansing

R 4047
 Rev. 10/68