

LAND CORNER RECORDATION CERTIFICATE

Filing Requirement of Act 74, Mich. PA 1970

For Corners In:
Antrim Located In _____ Corner Code # _____
 (County)

- | | | | | | |
|--------------------------------------|---|-------|---|-------|---------|
| 1. Public Land Survey | T | 31 N | R | 5 W | I-5 |
| | T | _____ | R | _____ | _____ |
| 2. Property Controlling in Section | S | 14 | T | 31 N | R 5 W |
| | S | _____ | T | _____ | R _____ |
| 3. Miscellaneous Property in Section | S | _____ | T | _____ | R _____ |
| | S | _____ | T | _____ | R _____ |

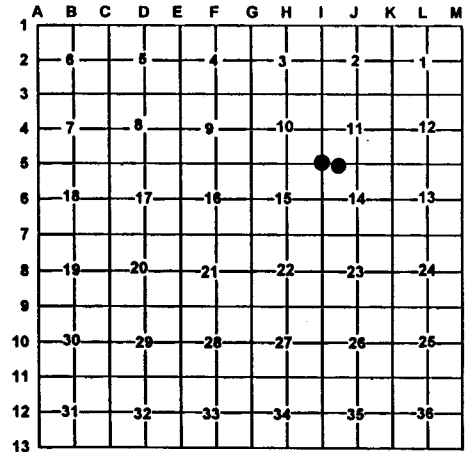
4. Lot No: _____ Recorded Plat: _____

5. Private Claims: _____

I, Carl T. Kiiskila, in a field survey on July 5, 2000 do hereby state that under requirements of PA 74, Michigan PA of 1970, the corner points mentioned in lines 1 and 2 above were in conformance with regulations and rules therefore as required in the current manual of survey instructions of the United States Department of the Interior, Bureau of Land Management or by a decree of a Court of Law and/or that the corner points mentioned in lines 3, 4 and 5 above were in conformance with the rules of the Michigan Board of Land Surveyors or by a Decree of a Court of Law; established, re-established, monumented, recovered, found as expressed below:

NOTE: Not more than 2 corners, all in the same town and range, may be recorded on this certificate.

Register of Deeds Stamp & File Number



A. Description of original monument and accessories and/or subsequent restoration:

I-5 GLO Austin Burt, D.S., July 1850
 Set post corner Sections 2,3,10, and 11
 Wit: 14" Sugar S66°E 20 links
 6" Beech N58°W 31 links
 Carl F. Roser RLS #12028 set standard DNR monument
 By proportionate measurement 10-25-71
 Wit: 5" Maple S49°E 5.6'
 7" Maple N72°E 17.6'
 6" Maple N15°E 13.1'

1 This corner position was not established during the original government survey.

B. Description of corner evidence found and/or method applies in restoring or re-establishing corner:

I-5 Found standard DNR monument and witnesses as established by Carl R. Roser, RLS #12028.

1 Established the Northeast corner of the Northwest quarter of the Northwest quarter of Section 14 as per BLM instructions for the subdivision of a section.

C. Description of monument for corner and accessories established to perpetuate locating the position of the corner:

I-5 Standard DNR monumnet and steel fence post.
 Wit: * 7" Maple S40°E 5.61'
 *10" Maple N86°E 17.95'
 * 8" Maple N29°E 13.21'
 4" Beech S69°W 19.78'

1 Set 5/8" X 32" rerod with PS cap #33981
 Wit: 7" Maple N17°W 17.28'
 14" Maple S87°E 11.08'
 5" Maple S08°W 23.80'
 5" Maple N75°W 26.32'
 Carsonite Post South 16.5'
 † trail road South 3'±

* Old witness

Signed by: Carl T. Kiiskila
 Surveyor's Michigan License No.: 33981

Date: 8-1-00

