

FEB 16 1994

Arenac County Remonumentation

LAND CORNER RECORDATION CERTIFICATE  
Filing Requirement of Act 74, Mich. P.A. 1970

LIBER 02 PAGE 010

For corners in \_\_\_\_\_

<u>Arenac</u> (County)	Located In:	Corner Code #
1. Public Land Survey	T <u>18N</u> R <u>4E</u>	<u>D-11</u>
	T <u>18N</u> R <u>4E</u>	<u>E-11</u>
	T _____ R _____	_____
	T _____ R _____	_____
2. Property Controlling in Section	S _____ T _____ R _____	_____
	S _____ T _____ R _____	_____
3. Miscellaneous Property in Sec.	S _____ T _____ R _____	_____
	S _____ T _____ R _____	_____
4. Lot No. _____, Recorded Plat _____		
5. Private Claims _____		

Dec 22 2 15 PM '93

RECORDED

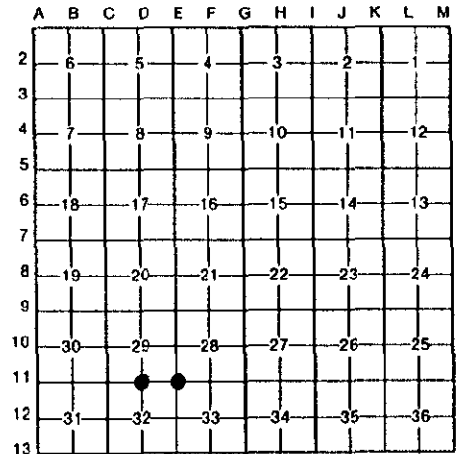
REGISTER OF DEEDS

ARENAC COUNTY REGISTER OF DEEDS

Register of Deeds Stamp & File Number

I, Craig W. McVean, in a field survey on September 2, 1993, do hereby certify that under requirements of P.A. 74, Michigan P.A. of 1970, the corner points mentioned in lines 1 and 2 above were in conformance with regulations and rules therefore as required in the current manual of survey instructions of the United States Department of the Interior, Bureau of Land Management or by a decree of a Court of Law and/or that the corner points mentioned in lines 3, 4 and 5 above were in conformance with the rules of the Michigan Board of Land Surveyors or by a Decree of a Court of Law; established, re-established, monumented, re-monumented, recovered, found as expressed below:

**NOTE: Not more than 4 corners, all in the same town and range, may be recorded on this certificate.**



A. Description of original monument and accessories and/or subsequent restoration:

D-11 Set post - J. Burt, 1843.  
W. Pine 36" S 20° E 48 Lks.  
W. Pine 18" N 76° W 28 Lks.

County surveyor notes - 1905. Distance and angle ties.  
M.D.O.T. witness card - 1963 - L 1, P. 212 - set 3/4" pipe. Distance and angle ties E, W, & S.

E-11 Set post - J. Burt, 1843.  
Hemlock 12" S 65° W 31 Lks.  
Hemlock 20" N 54° E 10 Lks.

County surveyor notes - 1905. Distance and angle ties W & S.  
County surveyor notes - broken glass and dishes around post. Distance and ties S & E. - 1907  
M.D.O.T. witness card - 1963 - L 1, P. 211 - found 1-1/2" pipe 3' deep. Raised with 1-1/2" iron shaft. Distance and angle ties N & W.

B. Description of corner evidence found and/or method applied in restoring or reestablishing corner:

D-11 Found 1-1/2" (top) x 48" oil well rod in mon. box. Fits M.D.O.T. distance and angle ties E, W, & S per L. 1, P. 212. Monument accepted as the best available evidence of the position of the original corner. Accepted by Arenac County Peer Review Group on 11-17-93.

E-11 Found 1-1/2" x 28" iron pipe. Remove. Found 1-1/2" outer diameter iron pipe 3' deep per M.D.O.T. witness card - L. 1, P. 211. Monument accepted as the best available evidence of the position of the original corner. Accepted by Arenac County Peer Review Group on 11-17-93.



C. Description of monument for corner and accessories established to perpetuate locating the position of the corner:

D-11 Replace oil well rod with 3" Arenac County brass cap on 5/8" x 24" rebar in mon. box.  
N 5° E 56.10' to nail and tag in S side 6" tree.  
S 34° W 96.43' to angle point on 2" angle steel fence post in concrete.  
S 42° E 87.66' to nail and tag in W side U.P.  
N 57° W 58.90' to nail and tag on centerline top guard post.

E-11 Leave 1-1/2" pipe 3' deep in place. Set 3" Arenac County brass cap on 5/8" x 24" rebar in mon. box.  
N 62° E 58.75 (N 75° E 58.91' - M.D.O.T) to nail and tag (M.D.O.T. tag below) in NW side U.P.  
S 45° E 152.53' to nail and tag in NE side 20" Oak.  
S 46° W 42.11' to 'x' on top concrete project marker.  
N 26° W 93.02' to NE corner block foundation garage.  
N 59° W 118.81' to SW corner stone foundation house.

Signed by Craig W. McVean  
Surveyor's Michigan License No. 39088

Date 12/20/93