

LAND CORNER RECORDATION CERTIFICATE
Filing Requirement of Act 74, Mich. P.A. 1970

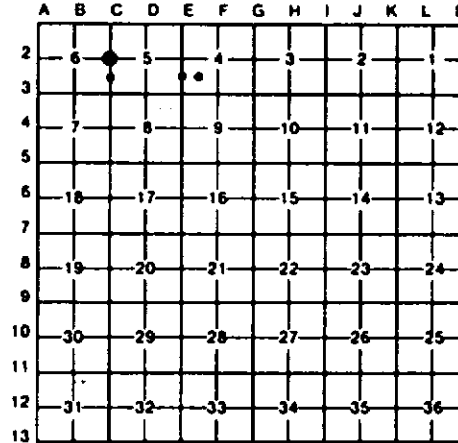
For corners in
ARENAC
 (County)

Located In: _____ Corner Code ~~##~~ _____

1. Public Land Survey	T <u>18N</u> R <u>6E</u>	<u>C-2</u>
	T _____ R _____	_____
	T _____ R _____	_____
	T _____ R _____	_____
2. Property Controlling in Section	S <u>4</u> T _____ R _____	<u>10, 11</u>
	S _____ T _____ R _____	_____
3. Miscellaneous Property in Sec.	S <u>5</u> T _____ R _____	<u>657.4 S OF C-2</u>
	S _____ T _____ R _____	_____

Register of Deeds Stamp & File Number

4. Lot No. _____, Recorded Plat _____
 5. Private Claims _____



I, CARL F. ROSER, in a field survey on MAY 21, 19 91, do hereby certify that under requirements of P.A. 74, Michigan P.A. of 1970, the corner points mentioned in lines 1 and 2 above were in conformance with regulations and rules therefore as required in the current manual of survey instructions of the United States Department of the Interior, Bureau of Land Management or by a decree of a Court of Law and/or that the corner points mentioned in lines 3, 4 and 5 above were in conformance with the rules of the Michigan Board of Land Surveyors or by a Decree of a Court of Law; established, re-established, monumented, re-monumented, recovered, found as expressed below:

NOTE: Not more than 4 corners, all in the same town and range, may be recorded on this certificate.

~~A. Description of original monument and accessories and/or subsequent restoration.~~

NOTE: SEE CO. SURVEYOR G.H. HOLLISTER'S FIELD BOOKS (NO'S 2 AND 6). LOCATED IN DRAWER AT REG OF DEEDS. BLUEPRINT OF HOLLISTER'S SUR IS IN POSSESSION OF HANSON SMITH, (MI DNR PURCHASED THE SMITH PROPERTIES AND OBTAINED ZEROX COPY OF SAID BLUEPRINT).

HOLLISTER'S 1911 SUR WAS FOR S. E. SYMONS OF SAGINAW, MI AND ENCOMPASSED FRL SEC'S 4, 5, 6 (T18N-R6E) AND SEC 32 & FRL SEC 33 (T19N-R6E).

(*C* CONTINUED)
 TOP CTR E END 42"
 ST CULV. N05°E 161'

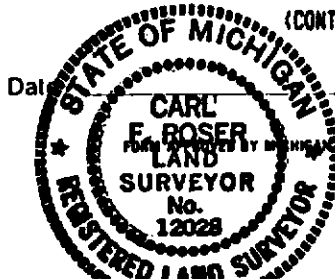
B. Description of corner evidence found and/or method applied in restoring or reestablishing corner:

C-2 RESTORED W 1/4 COR OF FRL SEC 5 PER 1911 SUR OF THIS AREA BY CO SURVEYOR, GEO. H. HOLLISTER.**	10 REESTAB'D SW COR OF NW 1/4 OF SW 1/4 (PART OF GOVT LOT 3) OF FRL SEC 4 PER 1911 SUR OF THIS AREA BY CO SURVEYOR G.H. HOLLISTER. COR SET IN 3" WATER AND CATTAILS AND SCATTERED BRUSH. NO WIT TREES AVAILABLE.** CTR RD ON E-W DIKE NORTH 26' CTR DMY TO CABIN EAST 109'	11 REESTAB'D SE COR OF NW 1/4 OF SW 1/4 (PART OF GOVT LOT 3) OF FRL SEC 4, PER 1911 SUR OF THIS AREA BY CO SURVEYOR G.H. HOLLISTER. NW COR OF EXCEPTION (SET 1" PIPE & ST. DR CED FENCE POST) IS S02°41'30"W, 102.30'.**	6 SET REF MON. N02°41'30"E, 79.20' FROM REC COMP POSITION FOR 1911 G.H. HOLLISTER MEANDER COR ON W LINE OF FRL SEC 5. W 1/4 COR OF SEC 5 IS N02°41'30"E, 657.40'. N EDGE OF SAGINAW BAY IS SOUTH. 90' (± 30'). CTR OF 2-TRACK ROAD BEARING NORTH, IS 23' EAST.**
--------------------------------------------------------------------------------------------------------------	------------------------------------------------------------------------------------------------------------------------------------------------------------------------------------------------------------------------------------------------------------------------------------------------	------------------------------------------------------------------------------------------------------------------------------------------------------------------------------------------------------------------------------------	----------------------------------------------------------------------------------------------------------------------------------------------------------------------------------------------------------------------------------------------------------------------------

C. Description of monument for corner and accessories established to perpetuate locating the position of the corner:

C-2 DROVE 1" X 60" GALV PIPE W/DNR ALUM CAP. SET CED POST. CTR N-B 2 TRACK RD EAST 24' NO OTHER WITS AVAILABLE.	10 DR 3/8" X 5' GALV PIPE W/RLS CAP & SET CED POST W/LOC TAG. N EDGE SAGINAW BAY SOUTH 155' (±20') DR 1" X 8' GALV PIPE W/RLS CAP & DR 8' STL FN POST S02°42'W 110.42' DR 5/8" X 34" REROD W/RLS CAP (ON 1/8 LINE) S87°34'E 117.91'	11 DROVE 1" X 96" GALV PIPE W/RLS CAP & SET CED POST W/LOC TAG. CTR RD ON DIKE N45 W 79' ±1' FB 1" X 6' PIPE, BENT & LEANING SW, IS WSN 6' CTR OF DIKE LOOKING N NORTH 37' ± CTR OF DIKE LOOKING N WEST 37' ±	6 REF MON TO G.H.H. MEANDER COR. DROVE 1" X 48" PIPE W/DNR CAP. WIT TO REF MON: TOP CTR N END 54" ST CULV. S85°E 88.5' TOP CTR S END 54" ST CULV. S65°E 92' TOP CTR W END 42" ST CULV. NORTH 163' (CONTINUED IN "A")
-----------------------------------------------------------------------------------------------------------------------------------------	-----------------------------------------------------------------------------------------------------------------------------------------------------------------------------------------------------------------------------------------------------	-------------------------------------------------------------------------------------------------------------------------------------------------------------------------------------------------------------------------	--------------------------------------------------------------------------------------------------------------------------------------------------------------------------------------------------------------------------------

Signed by Carl F. Roser 9-25-92
 Surveyor's Michigan License No. 12028



STATE BOARD OF LAND SURVEYORS, JAN. 28, 1971
 REVISED MAY 14, 1975
 REVISED JAN., 1983