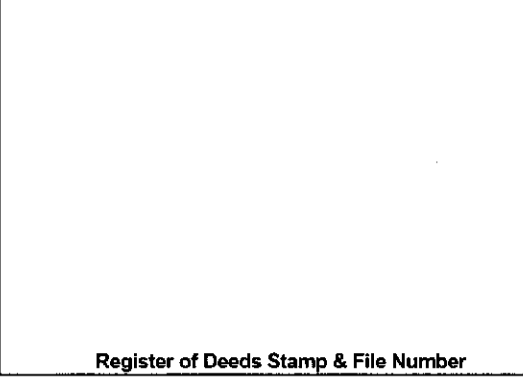


LAND CORNER RECORDATION CERTIFICATE

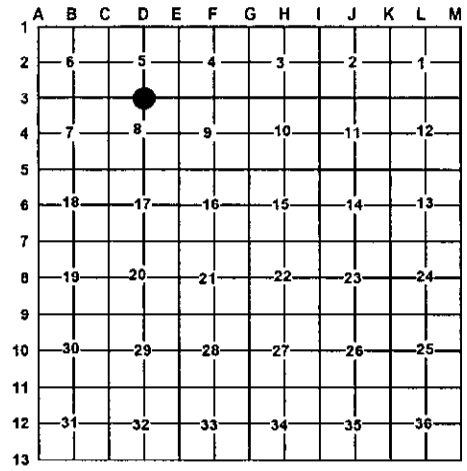
Filing Requirement of Act 74, Mich. PA 1970

For Corners In:			
<u>Arenac</u>	Located In	Corner Code #	
(County)			
1. Public Land Survey	T <u>19N</u> R <u>3E</u>	<u>D3</u>	
	T _____ R _____	_____	_____
2. Property Controlling In Section	S _____ T _____ R _____	_____	_____
	S _____ T _____ R _____	_____	_____
3. Miscellaneous Property in Section	S _____ T _____ R _____	_____	_____
	S _____ T _____ R _____	_____	_____
4. Lot No: _____	Recorded Plat: _____		
5. Private Claims: _____			



I, Craig W. McVean, in a field survey on Aug. 29, 2005 do hereby state that under requirements of PA 74, Michigan PA of 1970, the corner points mentioned in lines 1 and 2 above were in conformance with regulations and rules therefore as required in the current manual of survey instructions of the United States Department of the Interior, Bureau of Land Management or by a decree of a Court of Law and/or that the corner points mentioned in lines 3, 4 and 5 above were in conformance with the rules of the Michigan Board of Land Surveyors or by a Decree of a Court of Law; established, re-established, monumented, recovered, found as expressed below:

NOTE: Not more than 2 corners, all in the same town and range, may be recorded on this certificate.



A. Description of original monument and accessories and/or subsequent restoration:

D3 - GLO - W. Pine 10" for 1/4 Corner - J. Mullett - 1846
- CCC Notes 1930's - East 120 CH - Random post

B. Description of corner evidence found and/or method applied in restoring or re-establishing corner:

D3 - 1/4 Corner Common to Sec. 5 & 8 - No GLO or corner evidence found. Set 4" DNR Alum. Cap on 1" x 36" long galv. iron pipe by single proportion to GLO between found Consumer's position at 'C3' and re-established 'E3'. DNR Mon. accepted as a careful and faithful re-establishment of the position of the original corner.

C. Description of monument for corner and accessories established to perpetuate locating the position of the corner:

D3 - 4" DNR Alum. Cap on 1" x 36" galv. iron pipe.
Set Blue Carsonite Post 1' N.
N74°W 20.03' to set N & T in N. side 8" Oak scribed 'XBT'
S26°E 34.20' to set N & T in SW side Tw. 12" R. Maple scribed 'XBT'
S18°W 18.68' to set N & T in W. side 6" Oak scribed 'XBT'
N58°E 17.55' to set N & T in SE side 3" Oak



Signed by: Craig W. McVean Date: 9/22/2005
Surveyor's Michigan License No.: 39088