

LAND CORNER RECORDATION CERTIFICATE
Filing Requirement of Act 74, Mich. P.A. 1970

For corners in
ARENAC

(County)

Located In:

Corner Code #

1. Public Land Survey	T	19N	R	4E	J-7, K-6, K-7
	T		R		
	T		R		
	T		R		
2. Property Controlling in Section	S	14	T	R	8
	S		T	R	
3. Miscellaneous Property in Sec.	S		T	R	
	S		T	R	

Register of Deeds Stamp & File Number

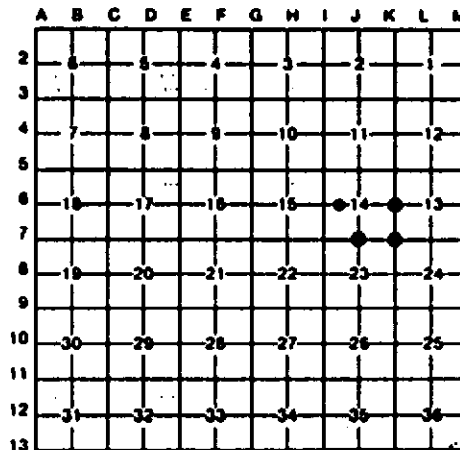
4. Lot No. _____, Recorded Plat _____
 5. Private Claims _____

I, CARL KIISKILA, in a field survey on AUGUST 14, 19 95, do hereby certify that under requirements of P.A. 74, Michigan P.A. of 1970, the corner points mentioned in lines 1 and 2 above were in conformance with regulations and rules therefore as required in the current manual of survey instructions of the United States Department of the Interior, Bureau of Land Management or by a decree of a Court of Law and/or that the corner points mentioned in lines 3, 4 and 5 above were in conformance with the rules of the Michigan Board of Land Surveyors or by a Decree of a Court of Law; established, re-established, monumented, re-monumented, recovered, found as expressed below:

NOTE: Not more than 4 corners, all in the same town and range, may be recorded on this certificate.

A. Description of original monument and accessories and/or subsequent restoration:
 J-7 K-6 K-7

(NO EVIDENCE OF G.L.O. CORNER, B.T.'S, LINE TREES & TOPOGRAPHY, AS CALLED OUT IN THE G.L.O. LINE NOTES; UNLESS NOTED IN ITEM "B" BELOW.)



B. Description of corner evidence found and/or method applied in restoring or reestablishing corner:

J-7 FB IRON W/TIN LAPHAN PS CAP FOR S 1/4 COR SEC 14. COR IS IN LINE W/CTR OF B. TOP RD LOOKING SOUTH. CTR B. TOP RD TO NW IS 228' +/- WEST.	K-6 FD AND ACCEPTED 1/2" REROD FOR THE E 1/4 CORNER OF SEC 14. COR WAS ACCEPTED AND RECORDED PER ACT 74, PA 1970 BY JOHN SEDGMAN PS ON MARCH 5, 1979, LI. 1, PG. 131. CTR N-S ROAD IS 4.5' EAST.	K-7 FD AND ACCEPTED A 3/4" X 2" STRAP IRON FOR THE SE CORNER OF SEC 14. COR WAS ACCEPTED AND RECORDED PER ACT 74, PA 1970 BY JOHN SEDGMAN PS ON MARCH 5, 1979; LI. 1, PG. 131. (J. SEDGMAN CALLED FOR A 1/2" X 1 1/2" STRAP IRON.)	8 ESTABLISHED THE SE CORNER OF THE SW 1/4 OF THE NW 1/4 OF SEC 14 PER STANDARD BLM INSTRUCTIONS.
---	---	---	---

C. Description of monument for corner and accessories established to perpetuate locating the position of the corner:

J-7 FB 1/2" IRON W/CAP, NORTH STAR SURVEY. 4" ASPEN S25°E 15.11' #POWER POLE S57°E 42.21' #12" ELN N80°W 56.91' CORNER FALLS IN SOUTH BANK OF E & W DITCH IN LINE WITH FENCE TO EAST. #T. LAPHAN WIT.	K-6 FB 1 1/4" PIPE BENT S & 1/2" REROD (USED THE 1/2" REROD). 12" TW WILLOW S86°W 22.04' #20" ELN N14°W 74.26' TELEPHONE RISER BOX (CTR TOP) N62°E 46.58' CTR STEEL LIGHT POLE S38°E 55.76' CTR N-S RD EAST 4.5' # = J. SEDGMAN, PS #18664.	K-7 FD 3/4" X 2" STRAP IRON IN CTR OF N-S ROAD. #POWER POLE N85°W 47.11' POWER POLE N65°E 56.98' #APPLE TREE N18°E 164.68' PHONE RISER BOX (CTR TOP) S86°E 27.09' #SEDGMAN WITNESS LIBER 1, PAGE 131.	8 SET 5/8" X 32" REROD & POST W/TAG 1" N. 14" OAK S77°W 23.60' 17" OAK N25°W 32.06' 4" OAK N66°E 22.16' 13" OAK S22°E 86.23' CTR E-W GR RD IS SOUTH 40'
---	--	---	--

Signed by Carl T. Kiiskila Date 9-6-95
 Surveyor's Michigan License No. 33981