

LAND CORNER RECORDATION CERTIFICATE
Filing Requirement of Act 74, Mich. P.A. 1970

For corners in
ARENAC
 (County)

Located In: Corner Code #

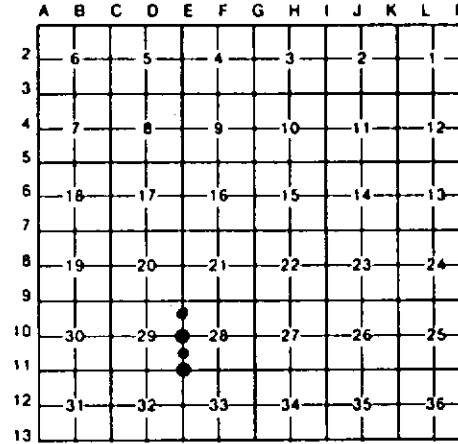
1. Public Land Survey	T	<u>19N</u>	R	<u>6E</u>	<u>E-10, E-11</u>
	T		R		
	T		R		
	T		R		
2. Property Controlling in Section	S	<u>28</u>	T	R	<u>10</u>
	S	<u>29</u>	T	R	<u>7</u>
3. Miscellaneous Property in Sec.	S		T	R	
	S		T	R	

Register of Deeds Stamp & File Number

4. Lot No. _____, Recorded Plat _____
 5. Private Claims _____

I, CARL F. ROSER, in a field survey on FEBRUARY 5, 19 92, do hereby certify that under requirements of P.A. 74, Michigan P.A. of 1970, the corner points mentioned in lines 1 and 2 above were in conformance with regulations and rules therefore as required in the current manual of survey instructions of the United States Department of the Interior, Bureau of Land Management or by a decree of a Court of Law and/or that the corner points mentioned in lines 3, 4 and 5 above were in conformance with the rules of the Michigan Board of Land Surveyors or by a Decree of a Court of Law; established, re-established, monumented, re-monumented, recovered, found as expressed below:

NOTE: Not more than 4 corners, all in the same town and range, may be recorded on this certificate.



A. Description of original monument and accessories and/or subsequent restoration:
 E-10 E-11 7

B. Description of corner evidence found and/or method applied in restoring or reestablishing corner:	E-10	E-11	7	10
	RESTORED N 1/4 COR OF SEC 28 ON LINE ACROSS FD E 1/4 COR & CTR OF SEC 28 (FITS PRIOR SURVEY BY RLS. RICHARD MILLER; N 1/2 OF SE 1/4 OF SEC 28) & ON LINE ACROSS SW COR & NW COR OF SEC 28. COR AS RESTORED FALLS AT APPROX FN REMAINS S & W. (OLD WELDED WOVEN WIRE FN REMAINS.)	RESTORED SEC COR COMMON TO SEC'S 28-29-32-33 AT OLD FN COR. FN REMAINS TO S & W. THIS FITS PRIOR SURVEYS BY CO. SURVEYOR GED. H. HOLLISTER TO WEST IN 1911; TO EAST IN 1908 & 1911, AND TO SOUTH IN 1911.	ESTABLISHED NE COR OF SE 1/4 OF NE 1/4 OF SEC 29 PER STD BLM INSTRUCTIONS. N-S TRAVERSE LINE IS 3.5' WEST.	ESTABLISHED SW COR OF N 1/2 OF SW 1/4 OF SEC 28 PER STANDARD BLM INSTRUCTIONS. COR IS ON N-S TRAVERSE LINE.

C. Description of monument for corner and accessories established to perpetuate locating the position of the corner:	E-10	E-11	7	10
	SET DNR MON. DROVE STEEL FN POST. 10" ASH N80°W 27.8' 8" & 16" ASH N70°E 6.7' 8" ASH S35°E 24.2' 9" ASH S25°W 13.6'	SET DNR MON & DROVE STEEL FN POST. 5" MAPLE N85°W 5.5' 11" MAPLE N15°W 14.2' 5" MAPLE S80°E 15.6' 8" ASH S40°E 24.2' 8" ASH S20°W 32.6'	DROVE 1" X 73" GALV PIPE W/RLS CAP. DROVE STEEL FN POST. 9" TW W OAK N30°W 14.4' 6" MAPLE S25°E 6.3' 9" W OAK S25°W 23.2' 10" MAPLE W/LOC TAG. S60°W 27.0'	DROVE 1" X 84" GALV PIPE W/RLS CAP & DROVE STEEL FN POST. 5" ASH N30°W 19.7' 16" X 9" MAPLE W/ LOC TAG N30°E 15.7' 5" ASH S30°E 4.1' 22" TW SWP OAK S20°W 46.8'

Signed by Carl F. Roser 12028 8-07-92 Date
 Surveyor's Michigan License No. _____

