

LAND CORNER RECORDATION CERTIFICATE

Filing Requirement of Act 74, Mich. PA 1970

For Corners In: <u>Arenac</u> (County)	Located In T <u>20N</u> R <u>3E</u>	Corner Code # <u>F11</u>
1. Public Land Survey	T _____ R _____	_____
2. Property Controlling in Section	S _____ T _____ R _____	_____
3. Miscellaneous Property in Section	S _____ T _____ R _____	_____

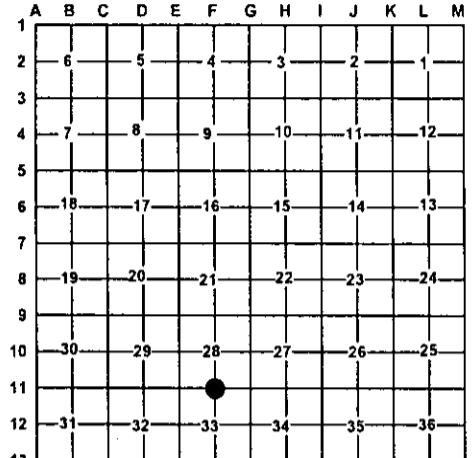
Register of Deeds Stamp & File Number

4. Lot No: _____ Recorded Plat: _____

5. Private Claims: _____

I, Craig W. McVean, in a field survey on Aug. 11, 2004 do hereby state that under requirements of PA 74, Michigan PA of 1970, the corner points mentioned in lines 1 and 2 above were in conformance with regulations and rules therefore as required in the current manual of survey instructions of the United States Department of the Interior, Bureau of Land Management or by a decree of a Court of Law and/or that the corner points mentioned in lines 3, 4 and 5 above were in conformance with the rules of the Michigan Board of Land Surveyors or by a Decree of a Court of Law; established, re-established, monumented, recovered, found as expressed below:

NOTE: Not more than 2 corners, all in the same town and range, may be recorded on this certificate.



A. Description of original monument and accessories and/or subsequent restoration:

<p><u>F11</u> - GLO - Set 1/4 Post - J. Mullett - 1846 Willow 4" S10°E 17 L. Aspen 6" N20°W 6 L. - CSR - FB #14, p. 51 & 53 - 1915 - Beer bottle placed as corner with papers in bearing data of survey. Aspen 5" South 3 L. - CSR - FB # 14, p. 75 - 1915 - CCC Notes - 1930's - Random from W. 197.15 CH. - Old post 40 N.</p>	<p>- MDOT Wit. Card - C. F. Roser - 1965 (LCRC L. 1, p. 236 - 1984) - Fd. Beer Bottle with note and point of wood stake. Set 2" pipe, 5' long with 26" above ground and set new beer bottle with old and new notes inside. Marked Cedar guard post. 11" W. Birch N60°W 9.90'; 6" Elm N10°W 16.75'; 16" Tw. Maple N40°E 13.81'; 8" Ash S40°E 18.14'</p>
--	---

B. Description of corner evidence found and/or method applied in restoring or re-establishing corner:

F11 - 1/4 Corner common to Sec. 28 & 33 - Fd. 2" Iron pipe - Up 2.2' - per MDOT. No GLO evidence found. Per the Co. Sur. notes this corner established by measurements from 'E11' - 40.07 CH (GLO) and 'F10' - 40 CH. 2" Iron pipe accepted as the best available evidence of the position of the original corner.

C. Description of monument for corner and accessories established to perpetuate locating the position of the corner:

F11 - Drove stamped 2" Alum. Cap on 5/8" x 4' long iron rebar into center of Fd. 2" pipe
 Set Blue Carsonite Post 1' S
 S79°E 44.14' to set N & T in N. side 3" W. Pine
 N39°E 14.04' to set N & T in NW side 16" R. Maple (MDOT)
 N7°E 32.95' to set N & T in E side 3" R. Maple
 N87°W 7.42' to set N & T in N side 8" Ash



Signed by: Craig W. McVean
 Surveyor's Michigan License No.: 39088

Date: 2/7/2005