

**LAND CORNER RECORDATION CERTIFICATE**  
**Filing Requirement of Act 74, Mich. P.A. 1970**

For corners in

<u>Baraga</u> (County)	Located In:	Corner Code #
1. Public Land Survey	T 47N R 33W	MC S. of E4
	T 47N R 33W	C5
	T _____ R _____	_____
	T _____ R _____	_____
2. Property Controlling in Section	S _____ T _____ R _____	_____
	S _____ T _____ R _____	_____
3. Miscellaneous Property in Sec.	S _____ T _____ R _____	_____
	S _____ T _____ R _____	_____

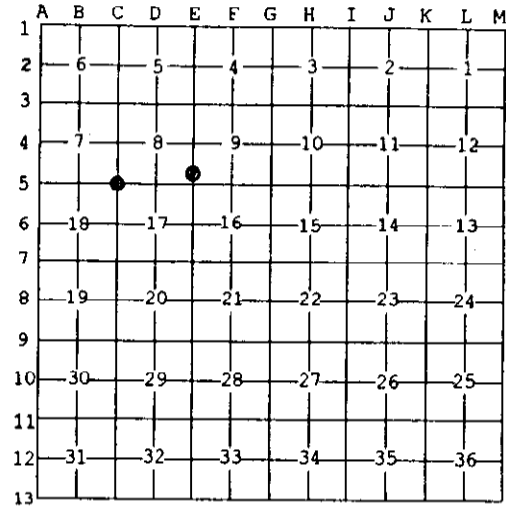
Register of Deeds Stamp & File Number

4. Lot No. \_\_\_\_\_, Recorded Plat \_\_\_\_\_  
 5. Private Claims \_\_\_\_\_

C5 Jun 25 2003  
 MC Jun 23 2003

I, Stephan J. Szyszkoski, in a field survey on \_\_\_\_\_, 20\_\_\_\_ do hereby state that under requirements of P.A. 74, Michigan P.A. of 1970, the corner points mentioned in lines 1 and 2 above were in conformance with regulations and rules therefore as required in the current manual of survey instructions of the United States Department of the Interior, Bureau of Land Management or by a decree of a Court of Law and /or that the corner points mentioned in lines 3, 4 and 5 above were in conformance with the rules of the Michigan Board of Land Surveyors or by a Decree of a Court of Law; established, re-established, monumented, recovered, found as expressed below:

**NOTE:** Not more than 2 corners, all in the same town and range, may be recorded on this certificate.



**A. Description of original monument and accessories and/or subsequent restoration:**

(MC S. of E4) Meander corner on the north shore of Drummond Lake, between Sections 8 & 9. 1852: Established by Francis Houck: S3'W corrected btwn Secs. 8&9...40.00 Set qr post...71.21 Intersect lake and set Meander Post. Tam 10 N59W 18, Tam [no dia. given] N48E 5.  
 (C5) Corner common to Sections 7-8-17-18. 1852: Established by Francis Houck. Hemlock 20 N45E 19 links, Y.Birch 12 S84W 19 links. 1932: Record of Northern Paper Mills states "Cole & Ellison found Y.Bir stump. Iron marks plain. Set post". 1954: Record of Northern Paper Mills states "Wickman & Peryam found post, stake in Y.Bir stump. No iron marks but definite faces on stump and on butt log. Set pipe from stump. Y.Birch 6 N23E 22, Red Maple 16 S31W 34.8 [links]". 1964: NPM pipe with cap recovered by Billy D. Buckler RLS who notes that original "Y.Birch and Hemlock stumps in proper distance and bearing but badly rotted". Remeasured NPM witnesses: 14" S.Maple S33W 34.5 links, 8" Y.Birch N25E 22 links.

**B. Description of corner evidence found and/or method applied in restoring or reestablishing corner:**

(MC S. of E4) The original post and accessories were not recovered. Reestablished the corner on a straight line between probable original corners E4 and the Meander corner on the south shore of Drummond Lake, and 2052.69' South of E4, the distance being indexed to the observed difference with the record between E3 and E4.

(C5) Recovered the Northern Paper Mills monument at record bearing and distance from the 1964 accessories. The Maple is in good condition with blazes overgrown. The Y.Birch is now a dead stub. Left the monument in place and made additional witnesses as described below.

**C. Description of monument for corner and accessories established to perpetuate locating the position of the corner:**

(MC) Set 1"IDx32" I.pipe with 4" alum. MDNR cap. Blazed, scribed, and set measuring nails in:  
 3" Tamarack N23E 16.7' "MC NBT"  
 4" B.Spruce N69W 15.3' do  
 4" Tamarack N44W 15.1' do  
 2" B.Spruce N09W 8.4' do  
 Bearings are magnetic. Distances to nail with tag. Set sq'd Tamarack post adjacent.

(C5) Found 1"ID I.pipe with 2" brass NPM cap. Blazed, scribed, and set measuring nails in:  
 10" Hemlock S86W 24.7' "S18 NBT"  
 20" Hemlock N30W 39.7' "S7 NBT"  
 7" Maple N62E 6.4' "S8 NBT"  
 16" Maple S38W 23.4' - 1964 NBT  
 Bearings are magnetic. Distances are to nail with tag. Placed sq'd cedar post adjacent.



Signed by Stephan J. Szyszkoski  
 Surveyor's Michigan License No. 33986

Date 7/16/03