

**LAND CORNER RECORDATION CERTIFICATE**  
**Filing Requirement of Act 74, Mich. P.A. 1970**

For corners in

<u>Baraga</u> (County)	Located In:	Corner Code #
1. Public Land Survey	T 47N R 33W	E3
	T 47N R 33W	B5
	T _____ R _____	_____
	T _____ R _____	_____
2. Property Controlling in Section	S _____ T _____ R _____	_____
	S _____ T _____ R _____	_____
3. Miscellaneous Property in Sec.	S _____ T _____ R _____	_____
	S _____ T _____ R _____	_____

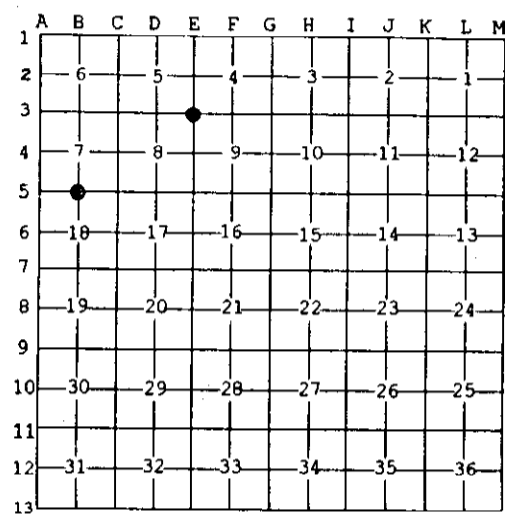
Register of Deeds Stamp & File Number

4. Lot No. \_\_\_\_\_, Recorded Plat \_\_\_\_\_  
 5. Private Claims \_\_\_\_\_

Jun 18 2003

I, Stephan J. Szyszkoski, in a field survey on \_\_\_\_\_, 20\_\_\_\_ do hereby state that under requirements of P.A. 74, Michigan P.A. of 1970, the corner points mentioned in lines 1 and 2 above were in conformance with regulations and rules therefore as required in the current manual of survey instructions of the United States Department of the Interior, Bureau of Land Management or by a decree of a Court of Law and /or that the corner points mentioned in lines 3, 4 and 5 above were in conformance with the rules of the Michigan Board of Land Surveyors or by a Decree of a Court of Law; established, re-established, monumented, recovered, found as expressed below:

**NOTE:** Not more than 2 corners, all in the same town and range, may be recorded on this certificate.

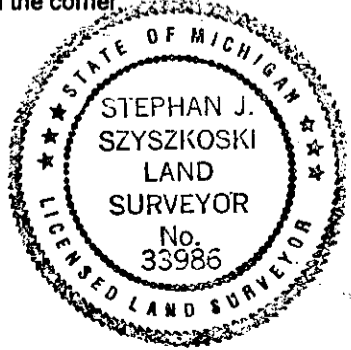


**A. Description of original monument and accessories and/or subsequent restoration:**  
 (E3) Corner common to Sections 4-5-8-9. 1852: Established by Francis Houck: 538'W corrected btwn Secs 4&5...80.25 Corner of Secs 4-5-8-9. Tam 18 N47E 88, Y.Birch 10 S50W 41.  
 (B5) Quarter corner common to Sections 7-18. 1852: Established by Francis Houck: N89 deg 53'E corrected between Secs 7&18...37.67 Set qr post. Sugar 8 N40E 32 links, Y.Birch 14 S47W 26 links...77.67 Sect. corner.

**B. Description of corner evidence found and/or method applied in restoring or reestablishing corner:**  
 (E3) The original post and accessories were not recovered. Reestablished the corner by double proportionate measurement to the original record between the following corners: Quarter corner B3 (7909.20'M 120.27 ch. GLO), Section corner K3 (15803.04'M 240.31 ch. GLO), Quarter corner E2 (2630.87'M 40.00 ch. GLO), and Quarter corner E4 (2630.79' 40.00 ch. GLO).  
 (B5) The original post and accessories were not recovered. Reestablished the corner on a line of mean true bearing between Section corners 2491.40' West and 2645.50' East, being proportionate to the original record.

**C. Description of monument for corner and accessories established to perpetuate locating the position of the corner:**

(E3) Set 1"IDx32" I.pipe with 4" alum. MDNR cap. Blazed, scribed, and set measuring nails in: 4" Maple N10E 38.8' "S4 N8T" 5" Balsam S74E 8.2' "S9 N8T" 12" W.Birch S21W 21.9' "S8 N8T" 6" Maple S88W 40.2' "S8 N8T" Set sq'd spruce post adjacent. Bearings are magnetic. Distances are to nail with tag.	(B5) Set 1"IDx32" I.pipe with 4" alum. MDNR cap. Blazed, scribed, and set measuring nails in: 5" Spruce N44E 14.2' "1/4S N8T" 11" Sugar S50E 15.6' do 8" Y.Birch S38W 26.8' do 8" Sugar N42W 11.6' do Set sq'd sugar post adjacent. Bearings are magnetic. Distances are to nail with tag.
---	---



Signed by Stephan J. Szyszkoski Date 7/16/03  
 Surveyor's Michigan License No. 33986