

**LAND CORNER RECORDATION CERTIFICATE**  
**Filing Requirement of Act 74, Mich. P.A. 1970**

For corners in

Baraga	Located In:	Corner Code #
(County)		
1. Public Land Survey	T <u>47N</u> R <u>33W</u>	<u>E2</u>
	T _____ R _____	_____
	T _____ R _____	_____
	T _____ R _____	_____
2. Property Controlling in Section	S <u>6</u> T <u>47N</u> R <u>33W</u>	<u>15</u>
	S _____ T _____ R _____	_____
3. Miscellaneous Property in Sec.	S _____ T _____ R _____	_____
	S _____ T _____ R _____	_____

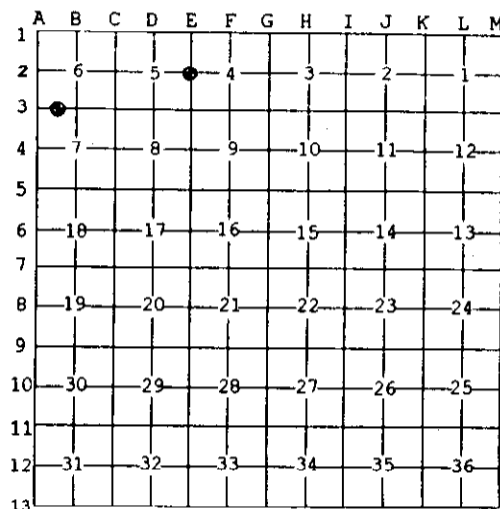
Register of Deeds Stamp & File Number

4. Lot No. \_\_\_\_\_, Recorded Plat \_\_\_\_\_  
 5. Private Claims \_\_\_\_\_

E2 Jun 18 2003  
 15 Jun 16 2003

I, Stephan J. Szyszkoski, in a field survey on \_\_\_\_\_, 20\_\_\_\_ do hereby state that under requirements of P.A. 74, Michigan P.A. of 1970, the corner points mentioned in lines 1 and 2 above were in conformance with regulations and rules therefore as required in the current manual of survey instructions of the United States Department of the Interior, Bureau of Land Management or by a decree of a Court of Law and /or that the corner points mentioned in lines 3, 4 and 5 above were in conformance with the rules of the Michigan Board of Land Surveyors or by a Decree of a Court of Law; established, re-established, monumented, recovered, found as expressed below:

NOTE: Not more than 2 corners, all in the same town and range, may be recorded on this certificate.



A. Description of original monument and accessories and/or subsequent restoration:  
 (E2) Quarter corner common to Sections 4-5. 1852: Established by Francis Houck: S38'W corrected between Secs 4&5...40.25 Set qr post. W.Pine 50 N13W 7 links, Y.Birch 16 S33E 61 links...80.25 Corner of Secs 4-5-8-9.  
 (15-Sec. 6) West 1/16 corner between Sections 6 and 7. Not established in the original survey.

B. Description of corner evidence found and/or method applied in restoring or reestablishing corner:  
 (E2) Remonumented the corner at the probable location of the original post, now a pocket of stained soil, found at record bearing and distance from the probable remains of the original BTs, a 50" rotting W.Pine stump and the decomposed remains of the Y.Birch, now ground level. Distances to adjacent section corners check extremely well with the record when indexed against other lines measured in the NW part of this township: 2630.87' south and 2639.44' north. This 1/4 corner was found about 12' east of a straight line between the Section corners.  
 (15-Sec. 6) Established the corner on a line of mean true bearing between Section corner 1177.70' West and Quarter corner 1313.66' East, being 20 chains, proportionate to the original record, west of the Quarter corner.

C. Description of monument for corner and accessories established to perpetuate locating the position of the corner:  
 (E2) Set 1"IDx32" I.pipe with 4" alum. MDNR cap. Blazed, scribed, and set measuring nails in:  
 6" Maple N48E 3.4' "1/4S NBT"  
 4" Maple S80E 16.6' do  
 7" Maple S31E 37.0' do  
 4" Sugar S48W 14.5' do  
 Set sq'd cedar post adjacent. Bearings are magnetic. Distances are to nail with tag.  
 (15) Set 1"IDx32" I.pipe with 4" alum. MDNR cap. Blazed, scribed, and set measuring nails in:  
 17" Hemlock N05E 39.5' "1/16S BT"  
 12" Hemlock S29E 6.5' do  
 8" Cedar S62W 23.9' do  
 15" Y.Birch N71W 12.7' do  
 Set sq'd cedar post adjacent. Bearings are magnetic. Distances are to nail with tag.



Signed by Stephan J. Szyszkoski Date 7/16/03  
 Surveyor's Michigan License No. 33986