

MICHIGAN  
DEPARTMENT OF CONSERVATION  
FORESTRY DIVISION

# LAND CORNER RECORD

T. 47-48 N.R. 34W

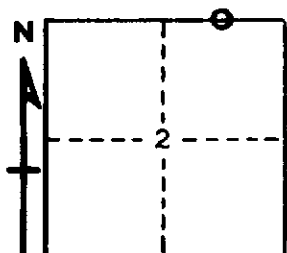
Baraga COUNTY

DESCRIPTION OF CORNER East 1/16 corner between Sec. 2 & 35

CORNER MONUMENT 1" I.D. x 36" iron pipe with 4" aluminum cap

DATE MONUMENT PLACED AND WITNESSED August 26, 1968

WITNESSES TO CORNER..... Red Maple 16 N71E 24 lks. "1/16S BT"



Sugar Maple 6 N60W 6 lks. "1/16S BT"

AND

CIRCLE CORNER REGISTERED

**DESCRIPTION IN DETAIL AS TO HOW CORNER WAS LOCATED AND IDENTIFIED OR RESTORED.**

This corner set midway on line between an original Section Corner 20.08 chains East and an original  $\frac{1}{4}$  corner 20.08 chains West, as measured by survey crew under the direction of B. D. Buckler, R.L.S.

No evidence that a corner monument or accessories was ever set here previously.

Names of persons present when monument was placed: A. O. Enger, J. E. Hulkonen, and W. A. Dellies.

**SURVEYOR'S SEAL**

SIGNED

Arthur O. Enger  
REGISTERED LAND SURVEYOR

DATE

11/26/68