

MICHIGAN
DEPARTMENT OF CONSERVATION
FORESTRY DIVISION

LAND CORNER RECORD

T. 47-48 N.R. 34W

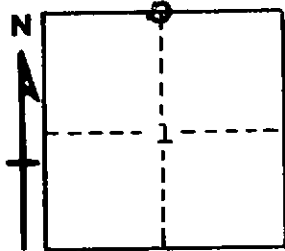
Baraga COUNTY

DESCRIPTION OF CORNER 1/4 corner between Sec. 1 & 36

CORNER MONUMENT 1" I.D. x 36" iron pipe with 4" aluminum cap
set inside a 1 1/2" I.D. iron pipe of unknown length.

DATE MONUMENT PLACED AND WITNESSED August 27, 1968

WITNESSES TO CORNER..... Red Maple 10 S52E 63 lks. "1/4 S NBT"



Red Maple 16 N8E 40 1/2 lks. "1/4 S NBT"

AND

CIRCLE CORNER REGISTERED

DESCRIPTION IN DETAIL AS TO HOW CORNER WAS LOCATED AND IDENTIFIED OR RESTORED.

This corner found while doing retracement work in the township. Found a 1 1/2" I.D. iron pipe in place set by unknown surveyor many years ago. Many old blazes and scars on living and down trees about the corner. No identifiable original evidence, but found a down and rotted soft maple about in right position for an original BT to NE of corner. Also found a short cedar stake with letters "BT" carved neatly on it facing the pipe, N20W 8 1/2 links from pipe. Ring count on a blazed 10" Y. Birch shows blaze to have been made about 50 years ago.

Corner is about 50 links North of a rock ledge as mentioned in original field notes.

This corner is not on a direct line between section corners. There appears to be a 0° 20' deflection to the right at this corner when travelling from West to East. Measurements by survey crew under direction of B.D. Buckler, R.L.S., indicate distance from this corner to NE corner Sec. 1, 47-34 is 40.19 chains and to NW corner Sec. 1, 47-34 is 40.10 chains.

Names of persons present when corner was placed: A. O. Enger, J. E. Hulkonen, and W. A. Dellies.

SURVEYOR'S SEAL

SIGNED Arthur O. Enger DATE 11/26/68
REGISTERED LAND SURVEYOR