

MICHIGAN
DEPARTMENT OF CONSERVATION
FORESTRY DIVISION

LAND CORNER RECORD

T. 47-48 N.R. 34W

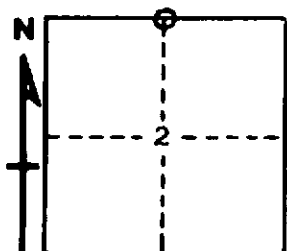
Baraga COUNTY

DESCRIPTION OF CORNER 1/4 corner between Section 2 & 35

CORNER MONUMENT 1" I.D. x 36" iron pipe with 4" aluminum cap

DATE MONUMENT PLACED AND WITNESSED August 26, 1968

WITNESSES TO CORNER..... Forked Hemlock 10 S55W 48 lks. "1/4 S, NBT"



Yellow Birch 6 S17E 8 1/2 lks. "1/4 S, NBT"

AND

CIRCLE CORNER REGISTERED

DESCRIPTION IN DETAIL AS TO HOW CORNER WAS LOCATED AND IDENTIFIED OR RESTORED.

Monument placed from one probable original BT, Black Ash 12 N12W 17, now down and badly rotted, but with overgrown blaze scars facing direction of corner. Corner found by locating midpoint of line between NE and NW corners of Sec. 2, both original. Found distance to NW sec. cor. to be 40.17 chains and to NE sec. cor. 40.15 chains (measurements by crew under direction of Billy D. Buckler, R.L.S.)

There appears to be a deflection of about $0^{\circ} 10' 35''$ to the right in the section line at the $\frac{1}{4}$ corner, travelling in a westward direction.

Corner is in a black ash swamp.

SURVEYOR'S SEAL

SIGNED Arthur O. Enger DATE 11/2/69
REGISTERED LAND SURVEYOR