

MICHIGAN
DEPARTMENT OF CONSERVATION
FORESTRY DIVISION

LAND CORNER RECORD

T. 47N N.R. 34W

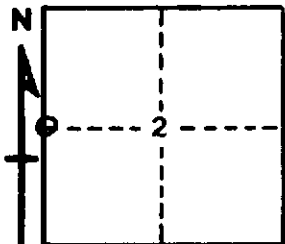
Baraga COUNTY

DESCRIPTION OF CORNER 1/4 corner between Section 2 & 3

CORNER MONUMENT 1" I.D. x 36" iron pipe with 4" aluminum cap

DATE MONUMENT PLACED AND WITNESSED August 26, 1968

WITNESSES TO CORNER..... Sugar Maple 7 S36W 31 lks. "1/4 S, NBT"



Sugar Maple 5 S48E 45 lks. "1/4 S, NBT"

Sugar Maple 5 N62E 18 1/2 lks. "1/4 S NBT"

AND

CIRCLE CORNER REGISTERED

DESCRIPTION IN DETAIL AS TO HOW CORNER WAS LOCATED AND IDENTIFIED OR RESTORED.

Monument placed from two original BT's: Hemlock 10 N40E 29, still green, overgrown upper and lower blazes with unexposed faces; and Maple 10 S20W 17, now a rotted stump with slabs of the trunk lying on the ground nearby. Found one slab with scar overgrowth and reverse impression of a scribe mark in the bark.

Corner position had been marked by unknown surveyor many years ago with a 2" x 2" x 4' squared cedar post set in a small mound of rocks. A blue paint line leads to this post from the north.

Corner is on a small level plateau at top of a low ridge.

SURVEYOR'S SEAL

SIGNED

Arthur P. Enger
REGISTERED LAND SURVEYOR

DATE

1/2/69