

MICHIGAN
DEPARTMENT OF CONSERVATION
FORESTRY DIVISION

LAND CORNER RECORD

T. 47 N.R. 34W

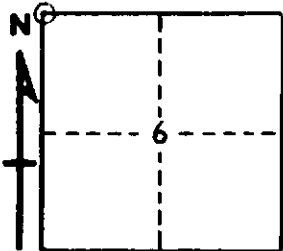
Baraga COUNTY

DESCRIPTION OF CORNER Northwest corner Section 6, also Northwest Township corner

CORNER MONUMENT 1" pipe with 4" aluminum cap

DATE MONUMENT PLACED AND WITNESSED October 31, 1966

WITNESSES TO CORNER..... 7" Hard Maple (S31 NBT) N50°E 30.5'



7" Hard Maple (S36 NBT) N67°W 15.0'

14" Y. Birch (S1 NBT) S4°W 43.8'

AND

CIRCLE CORNER REGISTERED

DESCRIPTION IN DETAIL AS TO HOW CORNER WAS LOCATED AND IDENTIFIED OR RESTORED.

This corner replaced from two original witnesses, a cedar bearing S37°E 44 lks., tree down with face in evidence and a Hemlock stump, bearing N32°W 29 lks., found face and scribe marks in poor condition.

SURVEYOR'S SEAL

SIGNED Billy D. Buckles DATE 3/24/69.
REGISTERED LAND SURVEYOR