

MICHIGAN
DEPARTMENT OF CONSERVATION
FORESTRY DIVISION

LAND CORNER RECORD

T. 47 N.R. 33-34W

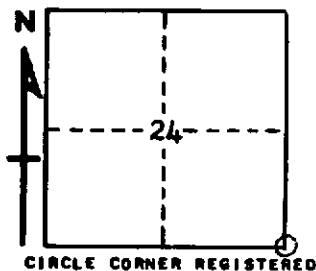
Baraga COUNTY

DESCRIPTION OF CORNER Sec. Cor. common to Sections 19, 30, 24, 25

CORNER MONUMENT 1" pipe with 4" aluminum cap

DATE MONUMENT PLACED AND WITNESSED November 9, 1966

WITNESSES TO CORNER..... 11" W. Pine (S25 NBT) S83°W 51.5'



9" Tamarack (S19 NBT) N83°E 53.7'

AND

DESCRIPTION IN DETAIL AS TO HOW CORNER WAS LOCATED AND IDENTIFIED OR RESTORED.

This corner replaced at site marked by blazes and old location tag. (Northern Paper Mills). Corner lies on a small island, 1/2 ch. West of swamp edge. Found some old cedar stumps in vicinity, but no positive identification.

SURVEYOR'S SEAL

SIGNED Billy O. Buckles DATE 3/24/69
REGISTERED LAND SURVEYOR