

LAND CORNER RECORDATION CERTIFICATE

FILING REQUIREMENT OF ACT 74, MICH. P.A.1970

FOR CORNERS OF--:	LOCATED IN--:	CORNER CODE NUMBER
1. PUBLIC LAND SURVEY _____	T. <u>47</u> N. <u>2.</u> R. <u>34</u> W.	<u>E2, E3, & K2</u>
2. PROPERTY CONTROLLING IN SECTION _____	T. _____ N. _____ S. _____ R. _____ E. _____ W. _____	_____
3. MISCELLANEOUS PROPERTY IN SECTION _____	T. _____ N. _____ S. _____ R. _____ E. _____ W. _____	_____
4. LOT NO. _____, RECORDED PLAT _____		
5. PRIVATE CLAIMS _____		

REGISTER OF DEEDS STAMP AND FILING NUMBER

I, Arthur O. Enger do hereby certify that under requirements of P.A. 74, Michigan P.A. of 1970, the corner points mentioned in lines 1 and 2 above (identified with circles on index code diagram - over) were, in a field survey on see below 19____, established, re-established, monumented, re-monumented, recovered or restored as expressed below and in conformance with regulations and rules therefore as required in the current manual of survey instructions of the United States Department of the Interior, Bureau of Land Management or by a decree of a court of law. Furthermore, that the corner points mentioned in lines 3, 4 and 5 above were, in a field survey on _____ 19____, found, recovered, restored, established or re-established as expressed below and in conformance with the rules of the Michigan State Board of Registration for Land Surveyors or, by a Decree of a Court of law:

A. Description of original monument and accessories and/or subsequent restoration:

Corner E2: Found a scribed 4"x4"x6' cedar post which had been set from an original bearing tree by B. D. Buckler, R.L.S. Could not identify the BT at this date.

Corners E3 & K2: Found no identifiable evidence of original posts or their accessories or of any replacement monuments or accessories.

B. Description of corner evidence found and/or method applied in restoring or re-establishing corner:

Corner E2: On 7/15/74 replaced the wood post with a new monument described in C, below.

Corner E3: Re-established 7/16/74 by proportionate measurement N & S between two original W. Pine line tree stumps (one N of corner identified by blaze, one S by position) and in departure by extension of line between original 1/4 cor. to N and line tree N of this corner. This appears to be closer to original position than by proportioning between nearest usable corners, none except one of which are known to be original.

Corner K2: Re-established 7/16/74 proportionately on line between original sec. corners 39.953 ch. S and 39.643 ch. N.

C. Description of monument for corner and accessories established to perpetuate locating the position of the corner:

Corner E2: 1" I.D. x 36" iron pipe with 3 1/2" aluminum cap.
 Red Maple 16 S15°W (mag.) 30.7 ft. "1/4S, NBT"
 Red Maple 14 S52°E (mag.) 35.0 ft. "1/4S, NBT"

Corner E3: 1" I.D. x 36" iron pipe with 3 1/2" aluminum cap.
 Sugar Maple 5 S89°W (mag.) 11.0 ft. "S9, NBT"
 Red Maple 6 S32°W (mag.) 28.6 ft. "S8, NBT"
 Red Maple 6 N 5°W (mag.) 7.1 ft. "S5, NBT"

Corner K2: 1" I.D. x 39" iron pipe with 3 1/2" aluminum cap.
 Twin Y. Birch 16 N43°W (mag.) 12.5 ft. "1/4S, NBT"
 Y. Birch 13 S 8°W (mag.) 3.7 ft. "1/4S, NBT"

SIGNED BY _____ DATE _____

SURVEYOR'S MICHIGAN REGISTRATION NO. _____ (SEAL)

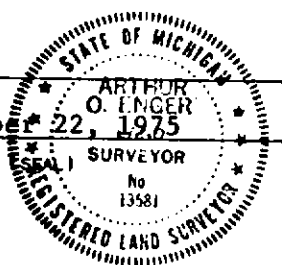
FOR STATE AND UNITED STATES AGENCIES:

SIGNED BY _____ CHIEF OF SURVEY PARTY DATE _____

APPROVED AND SIGNED BY Arthur O. Enger DATE October 22, 1975
 MICHIGAN REGISTERED LAND SURVEYOR

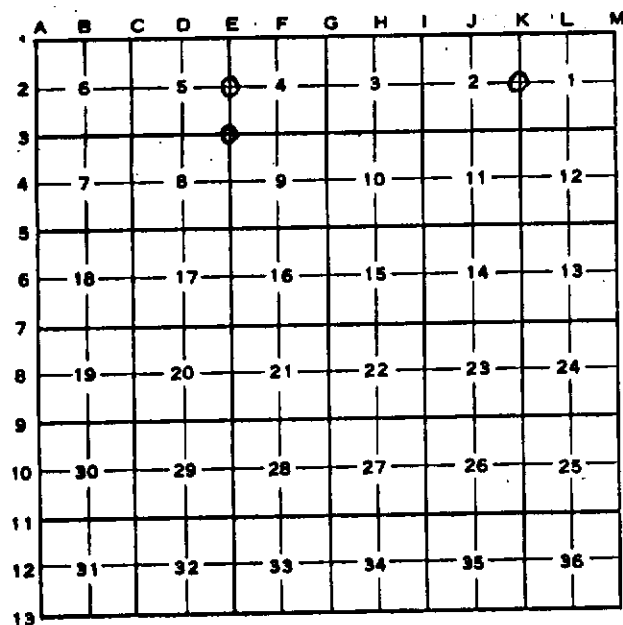
Arthur O. Enger
 Michigan Department of Natural Resources

SURVEYOR'S MICHIGAN REGISTRATION NO. 13581



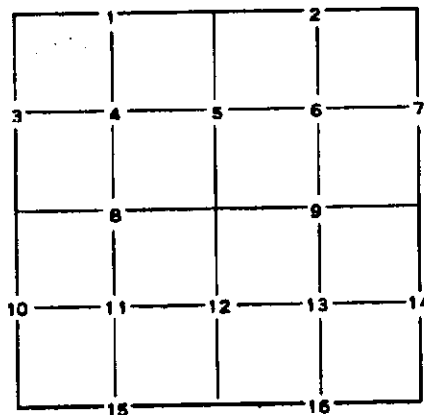
CORNER NUMBERING CODE DIAGRAMS FOR IDENTIFYING LAND CORNER RECORDATIONS AND INDEXING

**FOR PUBLIC LAND SURVEY CORNERS IN THE
T. 47N, R. 34W (MENTIONED OVER)**



Apply letter prefix for corner points encircled above for identifying corner recordation numbers over.

**FOR PROPERTY CONTROLLING AND MISC.
PROPERTY CORNERS WITHIN THE SECTION
(MENTIONED OVER AND EXCLUDE LOT CORNER)**



1. Above coded numbers are positioned on 1/16 fractional lines of the section.
2. Township corner code numbers shall be applied to corners of above typical section not numbered.
3. Miscellaneous property corners within a section, located at points other than numbered above, shall be referenced to at least two of above corner code numbers.
4. Private claim corners to be tied to rectangular land corners if possible - sketch required below.

EXPLANATORY SKETCH IF NECESSARY -- BELOW

